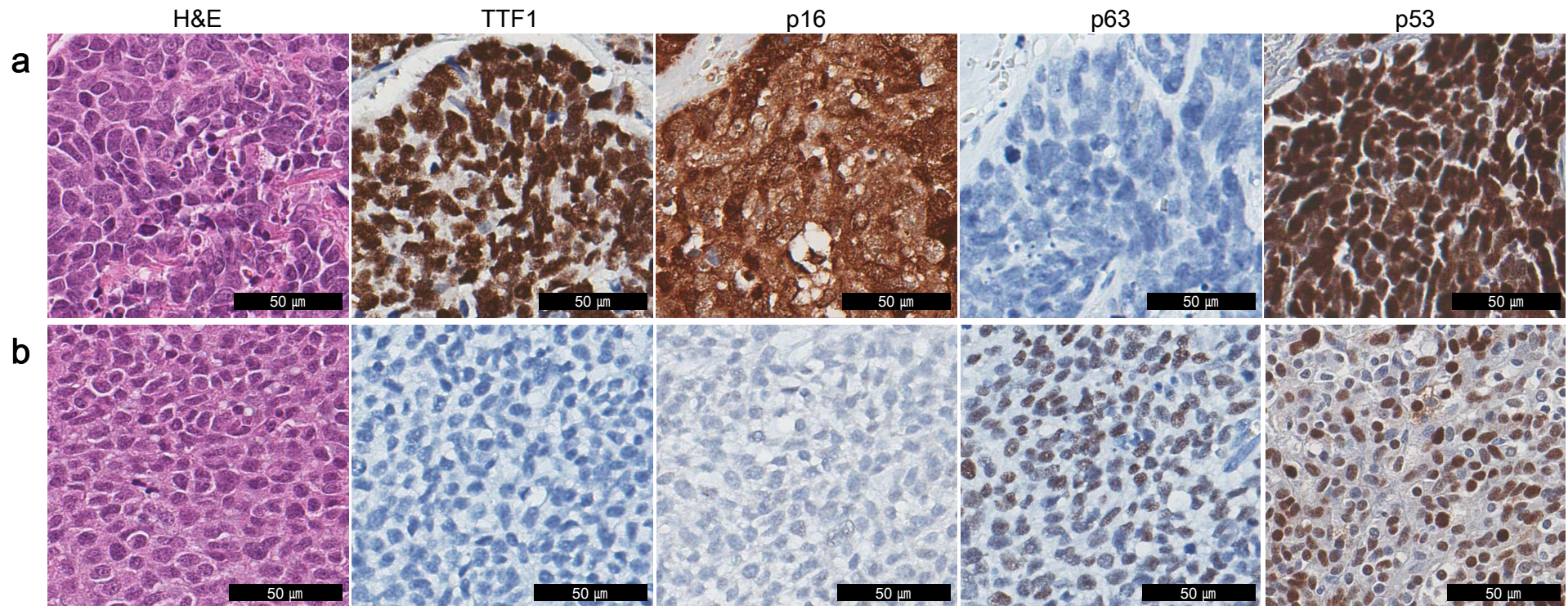


Supplementary Figure S1. Expression of TTF1, p16, p63 and p53 in EP-NEC/PDC cohort.



(a) Large cell neuroendocrine carcinoma arising in the ovaries of a 73-year-old female shows TTF1 positivity, along with block positive p16 expression and p63 overexpression. (b) Tonsillar cancer of a 54-year-old male had poorly differentiated histology, showing focal positivity in p63 immunostaining; the case was diagnosed as basaloid squamous cell carcinoma.