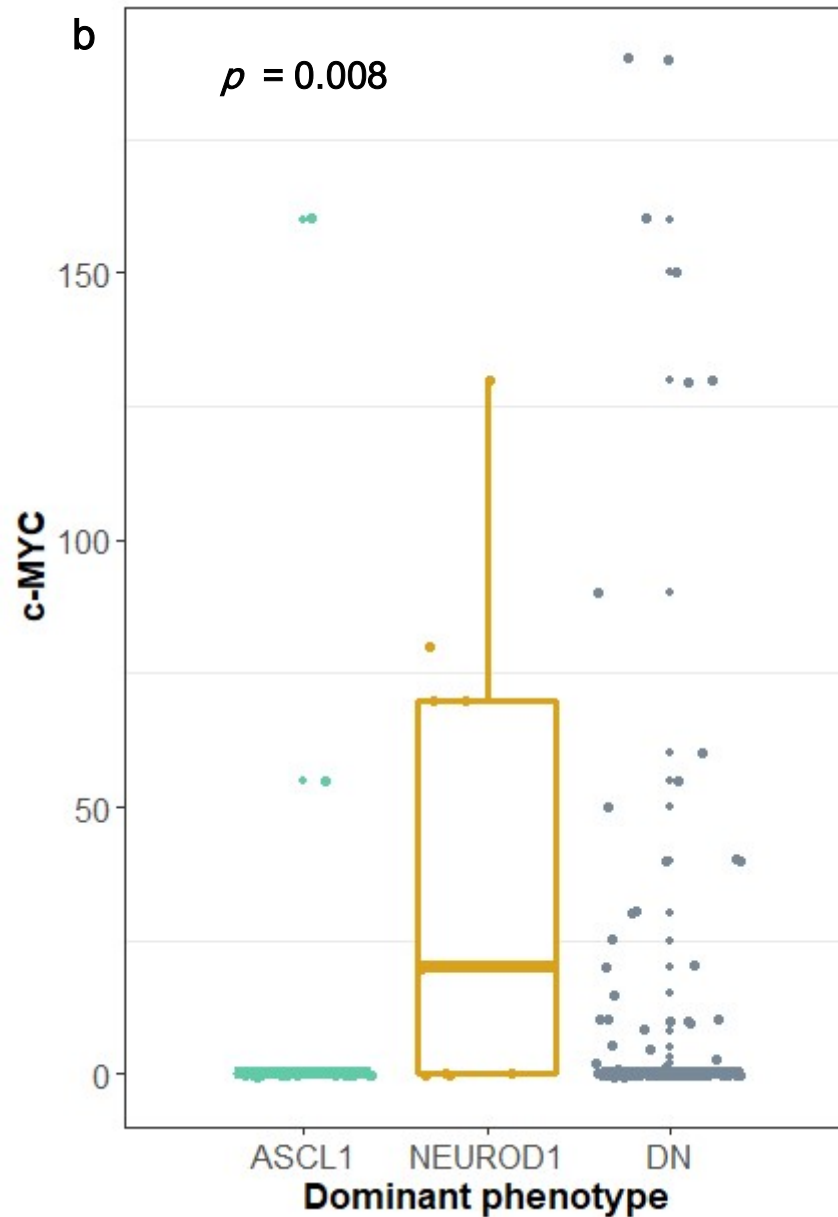
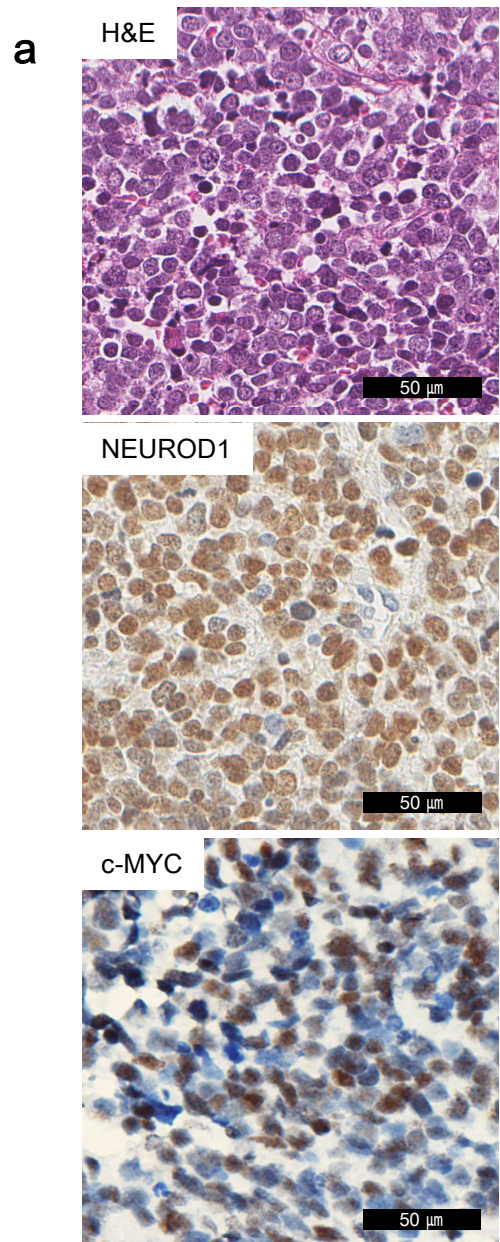


Supplementary Figure S2. Association between the expression patterns of c-MYC and NEUROD1.



(a) A small cell neuroendocrine carcinoma in gallbladder from a 73-year-old male patient was NEUROD1-dominant by immunohistochemistry and had high expression of c-MYC (H-score of 130).

(b) c-MYC expression was significantly higher in NEUROD1-dominant tumors compared to ASCL1-dominant or double negative cases. ($p = 0.008$ by Kruskal-Wallis)