

# Gender-Inclusive Language in Patient Education for Breast Reconstruction

Inclusive terminology and pronouns are essential to facilitate an affirmative environment for transgender and non-binary patients undergoing breast reconstruction surgery

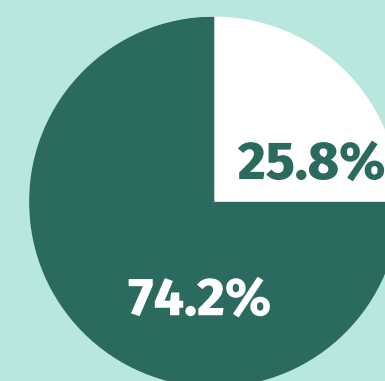


This study evaluates the gender inclusivity of patient education materials for breast reconstruction surgery

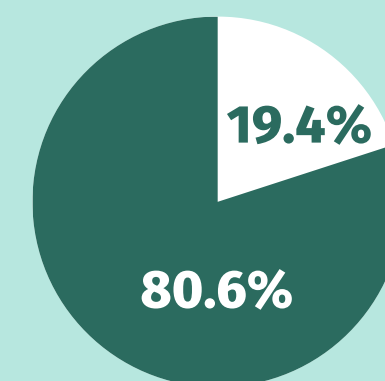


## Terminology usage

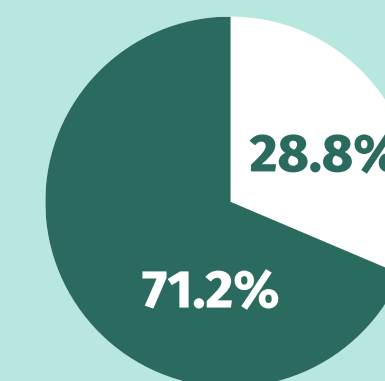
Gender-specific Gender-inclusive



Overall



Comprehensive gender program  
(Offering both top and bottom surgery)



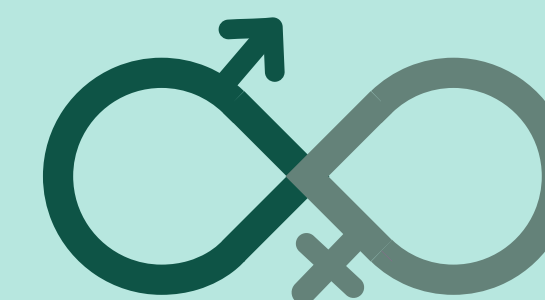
No comprehensive  
gender program



Use of inclusive  
terminology

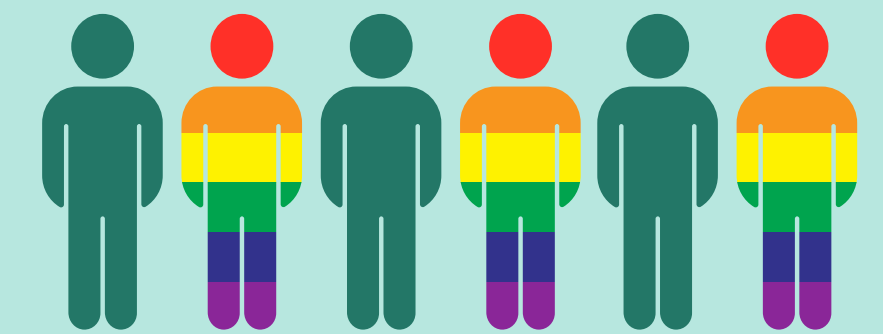


Not linked to



Presence of comprehensive  
gender-affirming care program

## Pronoun usage



**No hospital**  
used  
gender-inclusive  
pronouns outlined by  
the LGBTQIA+ Health  
Education Center

The lack of gender-inclusive language in patient education materials for breast reconstruction surgery must be addressed to meet the needs of a diverse population