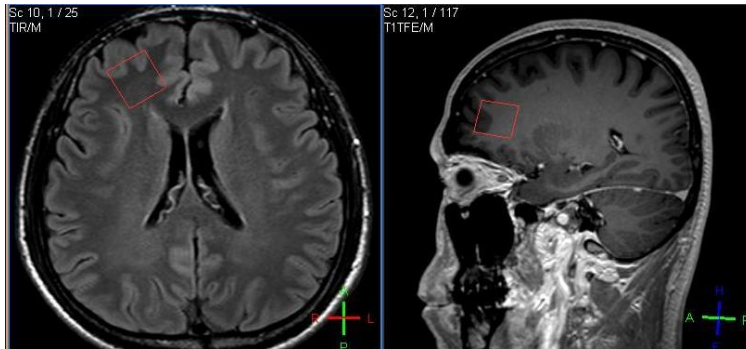


Supplemental Digital Content 2

Panel A



Panel B

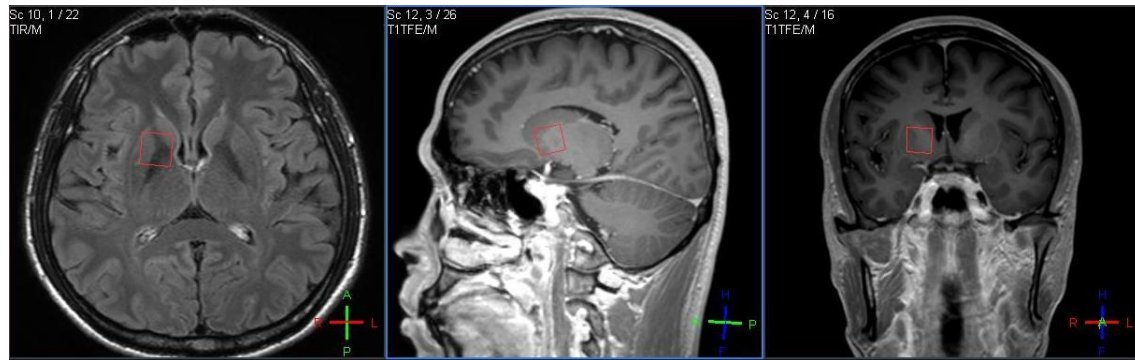
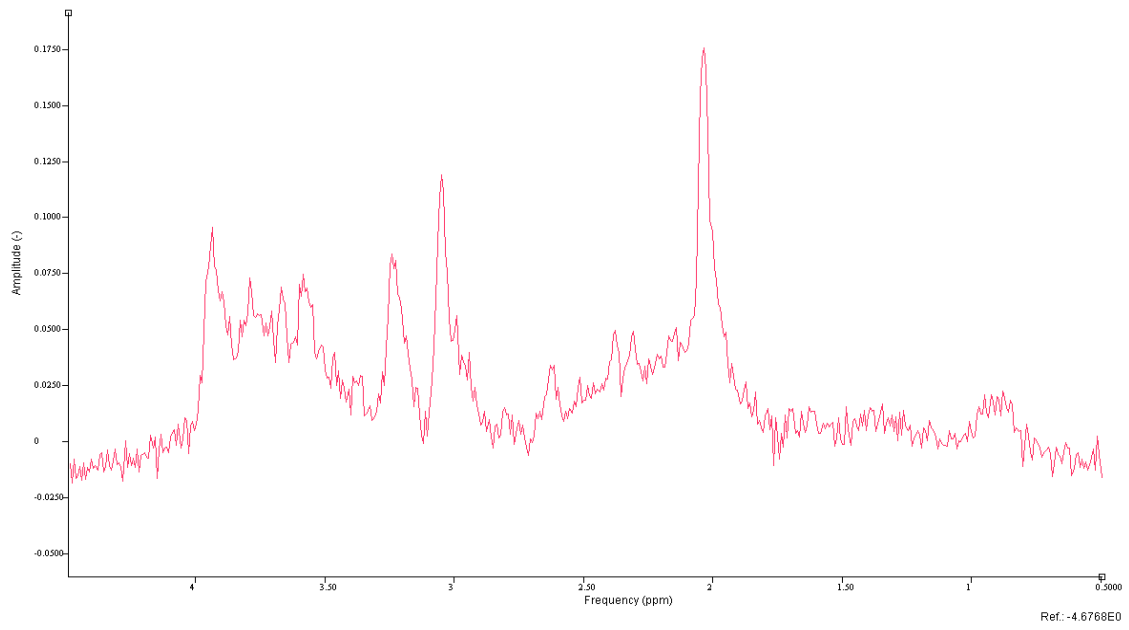


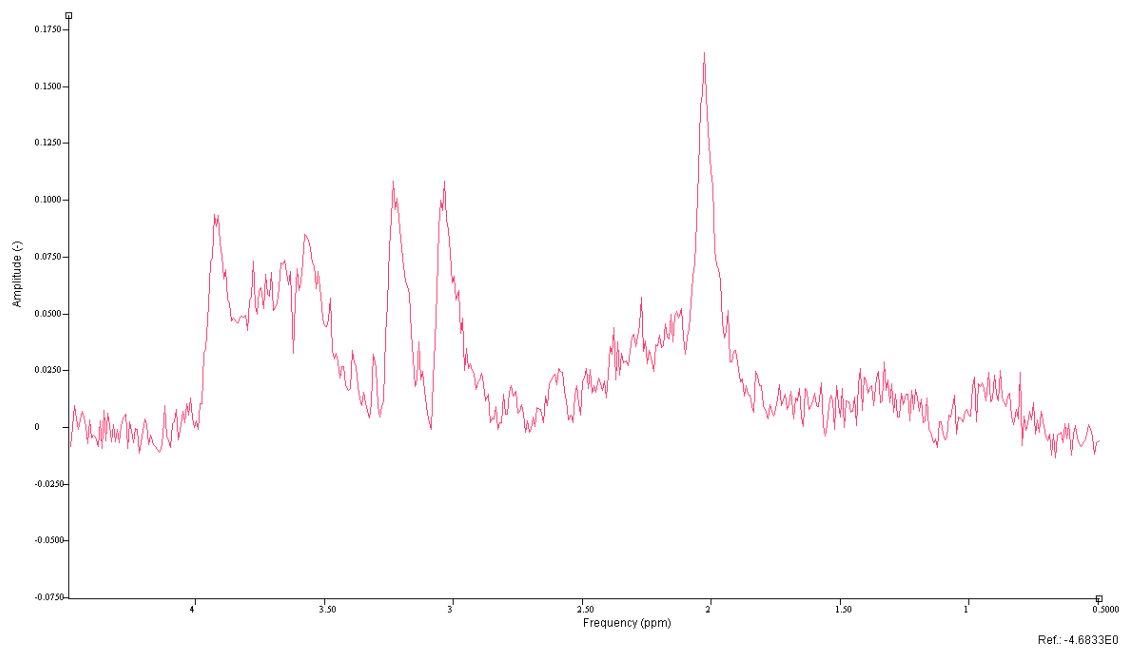
Figure 1. T1-weighted MR images showing target voxel positions used to acquire frontal white matter (20mm^3 ; Panel A) and basal ganglia spectra (15mm^3 ; Panel B) via PRESS.

Panel A – Frontal White Matter (FWM)

MA

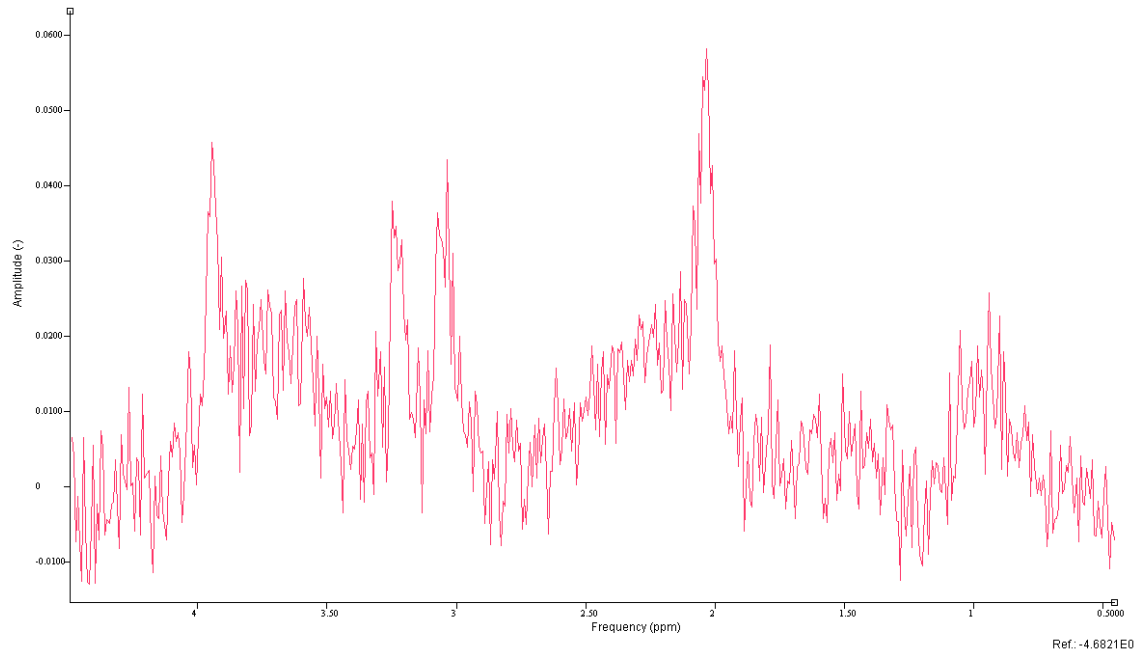


Control



Panel B – Basal Ganglia (BG)

MA



Control

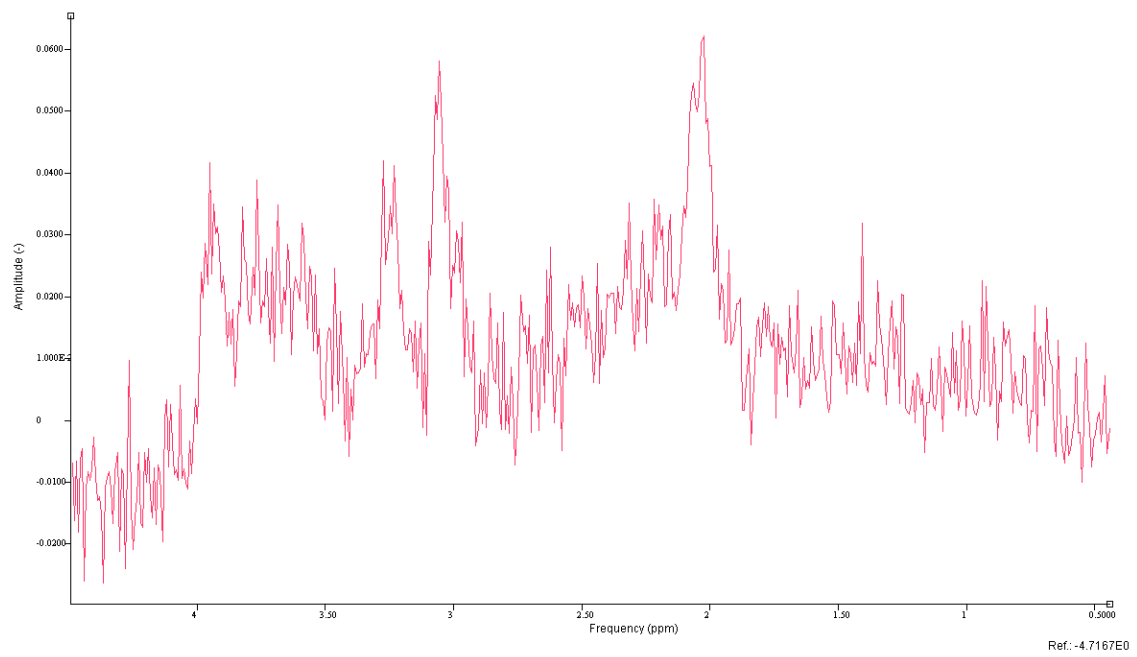


Figure 2. MR Spectra illustrations acquired from the FWM (Panel A) and BG (Panel B) of a MA and control participant at baseline using PRESS and analyzed using jMRUI/AMARES.