

Online Figures

Figure 1. Example of a failure during automated post-processing of CT-perfusion data. Green indicates penumbra ($T_{max} > 6s$). If the PCT results would have been interpreted literally, this patient would not have been treated because of the artifactual presence of a constituted infarct without any penumbra.

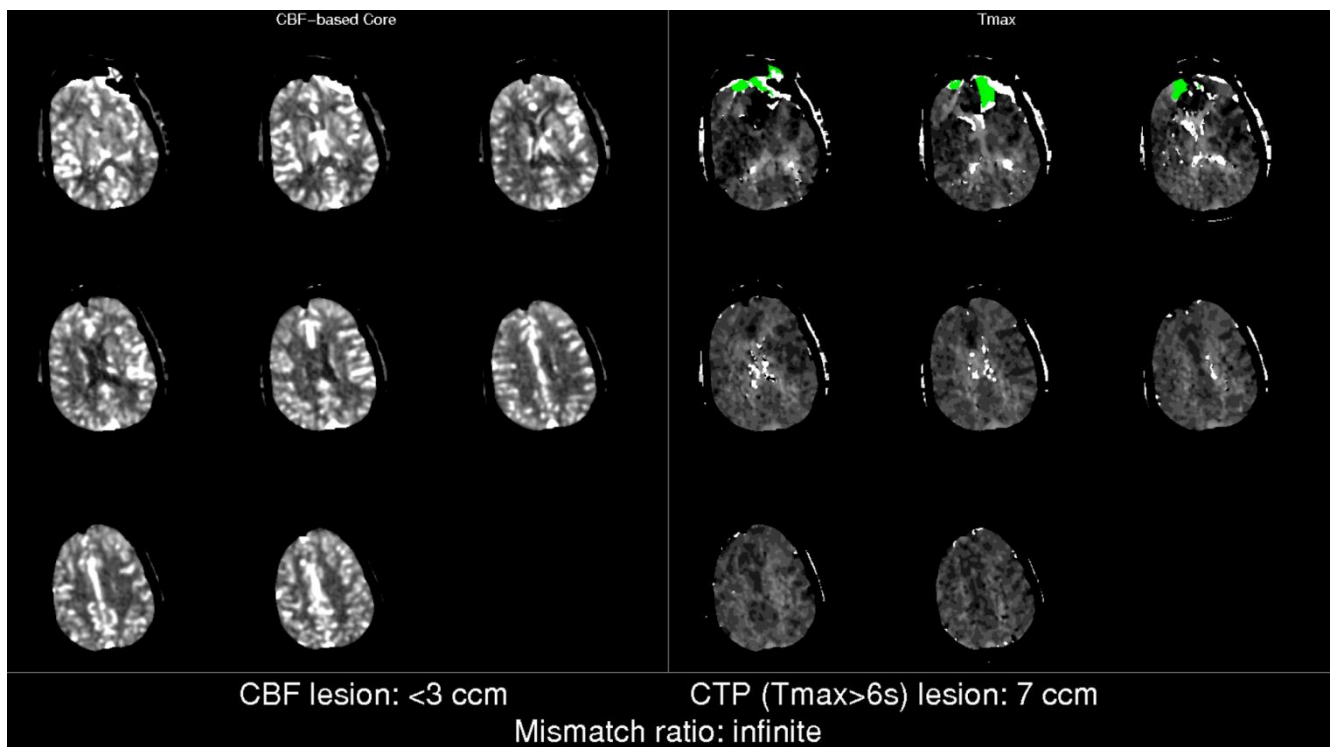


Figure 2. (A) Another example of a post-processing failure. Purple indicates infarct core (cerebral blood flow <30%) and green indicates penumbra (Tmax>6.0s). This patient would have been treated if the PCT results would have been interpreted literally because of the artifactual presence of a small ischemic core with a large mismatch. (B) However, on subsequent MRI, a small infarct was seen in a different region of the brain than that identified by PCT, which matched better the patient's presenting symptoms and, together with the lack of a large artery occlusion, explained why the patient did not receive endovascular treatment.

