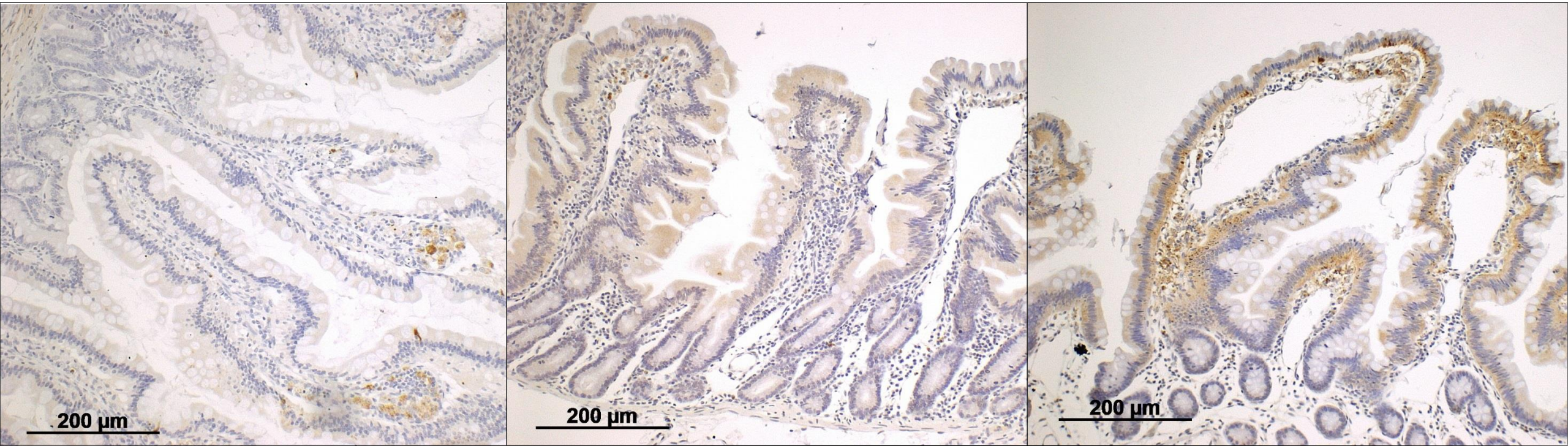


Supplementary Figure 2



Ctrl

HS + CP40

HS + NaCl

Immunohistochemical staining of small intestine sections (jejunum) for cleaved caspase-3.

Displayed are representative figures of control animals (Ctrl), and non-human primates in hemorrhagic shock (HS) treated with either the C3 inhibitor CP40 or the vehicle (saline, NaCl).