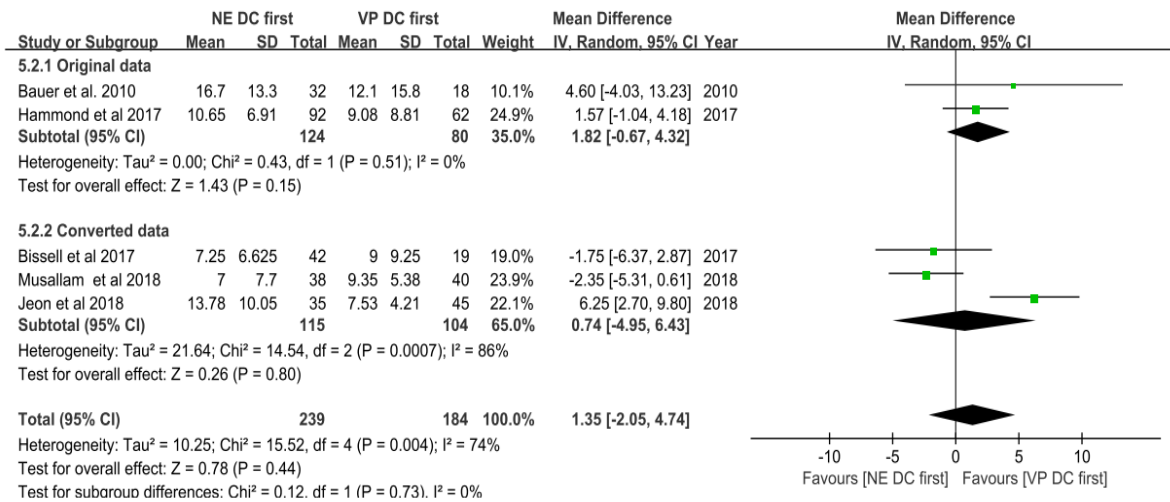
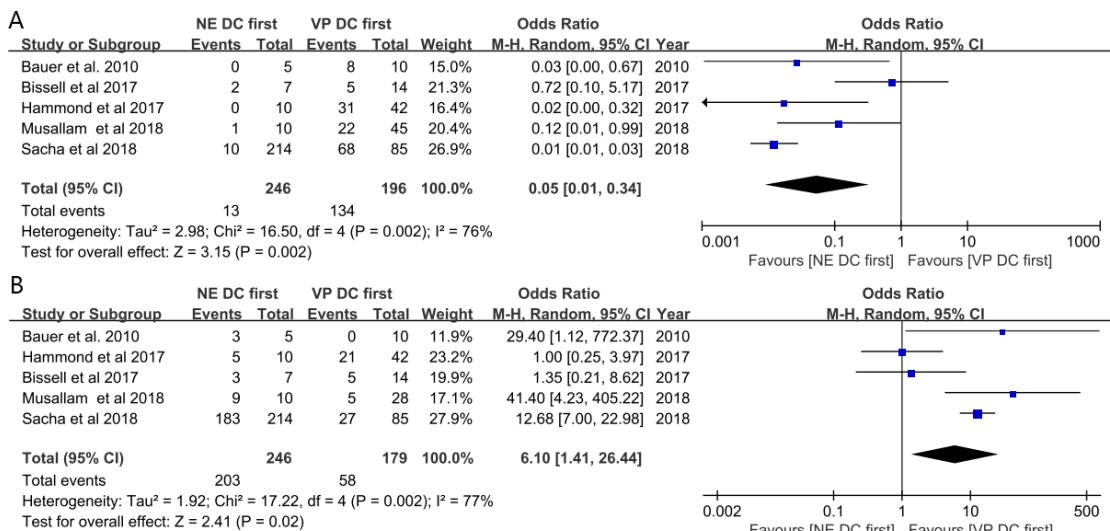


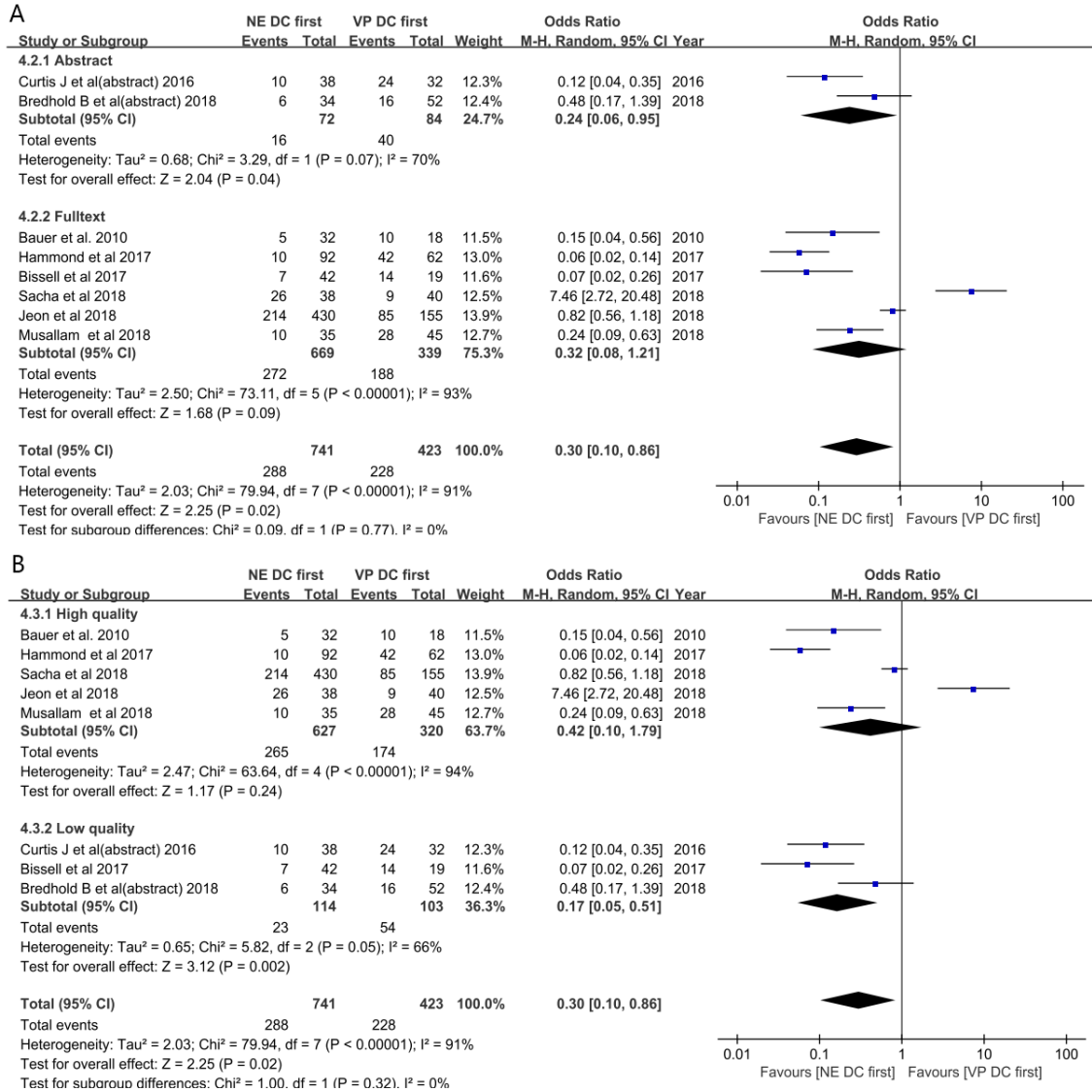
Supplementary Figure 1. Mean difference in time (hours) to hypotension in different vasopressor discontinuation order in patients with septic shock. NE: norepinephrine; VP: vasopressin; **DC: discontinued**; CI: confidence interval, M-H: Mantel-Haenszel.



Supplementary Figure 2. Forrest plot showing the effect of different vasopressor discontinuation order on ICU length of stay(days) for patients with septic shock NE: norepinephrine; VP: vasopressin; **DC: discontinued**; CI: confidence interval, IV: Inverse Variance.

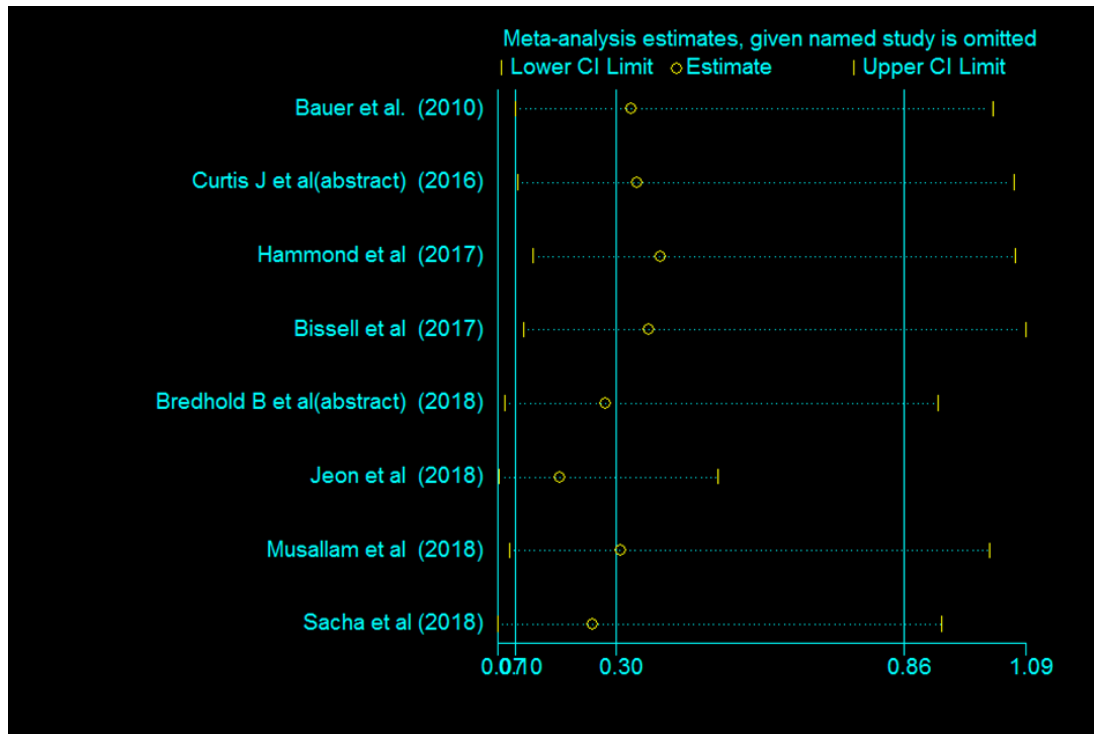


Supplementary Figure 3. Forrest plot showing the different favor therapeutic strategy (A. increased remain vasopressor dose and B. restarted vasopressor) after hypotension occurring for patients with septic shock. NE: norepinephrine; VP: vasopressin; **DC: discontinued**; CI: confidence interval, M-H: Mantel-Haenszel.

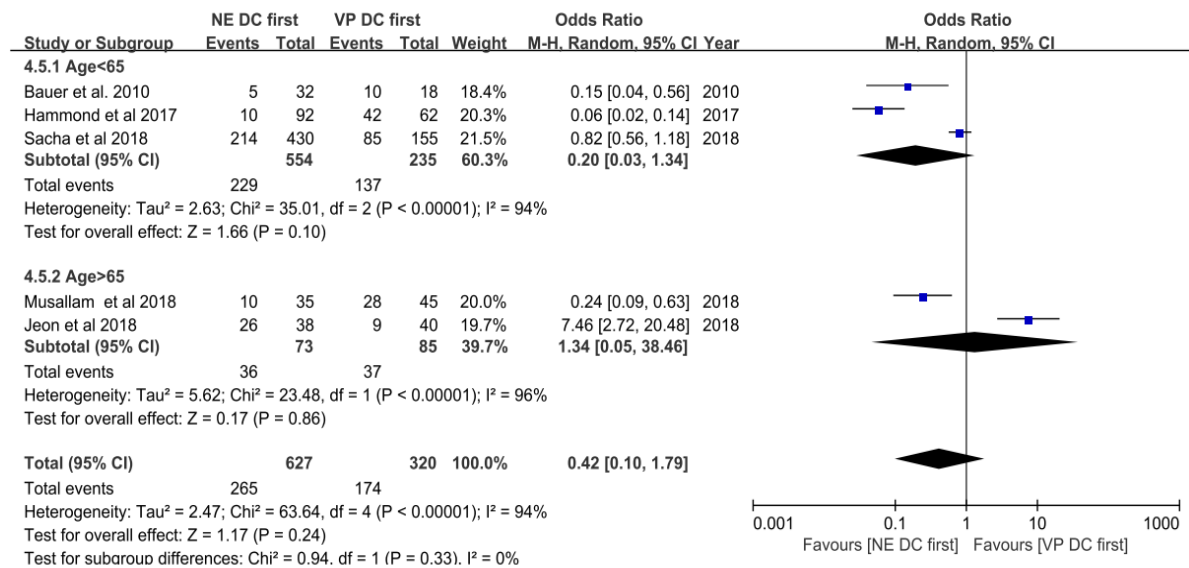


Supplementary Figure 4. Sensitivity analyses of the studies. (A. Analyzing published studies separately from abstracts, B. Including only high quality reports (Newcastle-Ottawa score ≥ 7).

. NE: norepinephrine; VP: vasopressin; **DC: discontinued**; CI: confidence interval, M-H: Mantel-Haenszel.



Supplementary Figure 5. Sensitivity analyses were performed by removing each study individually. CI: confidence interval.



Supplementary Figure 6. The effect of VP vasopressin discontinued first in the different average age for patients with septic shock. NE: norepinephrine; VP: vasopressin; **DC: discontinued**; CI: confidence interval, M-H: Mantel-Haenszel.

**Supplementary Table 1. Methodology and reporting assessment
a. Newcastle Ottawa scores (out of 9 maximum) of cohort study quality for
included reports**

Study	Selection	Comparability	Outcome	Total
Bauer et al.	4	2	3	9
Bissell et al.	2	1	3	6
Hammond et al.	4	2	3	9
Musallam et al.	3	2	3	8
Sacha et al.	4	2	3	9
Bredhold B et al.(abstract)	3	0	3	6
Curtis J et al. (abstract)	3	0	3	6

b. Cochrane Collaboration tool for assessing risk of bias

Study	Sequence generation	Allocation concealment	Blinding of participants and outcome	Incomplete outcome data	Selective reporting	Risk of bias
Jeon et al.	Y	Y	Y	N	N	Low

Supplementary Table 2 Sensitivity Analyses of the Studies

Study Attributes	No. of Studies	No. of Patients	OR (95% CI)	P Value	I² (%)
Bauer et al.	7	1114	0.33(0.10, 1.03)	0.06	92
Bissell et al.	7	1103	0.36(0.12, 1.09)	0.07	92
Hammond et al.	7	1010	0.39(0.14, 1.07)	0.07	89
Jeon et al.	7	1086	0.19(0.07, 0.50)	0.01	88
Musallam et al.	7	1084	0.31(0.09, 1.02)	0.05	92
Published articles	6	1008	0.32(0.08, 1.21)	0.09	93