

Supplementary material

Vivo (GalN/LPS & PH/LPS)

Fig. 3A. Nuclear factor-kappa B (NF- κ B)

Fig. 3B. Nuclear factor-kappa B (NF- κ B)

Primary cultured hepatocytes

Fig. 7A. Inducible nitric oxide synthase & Beta tubulin (iNOS & β T)

Fig. 8A. Inhibitor of nuclear factor κ B α & Beta tubulin (I κ B α & β T)

Fig. 8B1. Electrophoretic mobility shift assay/Nuclear factor-kappa B (EMSA/NF- κ B)

TITLE: OMEPRAZOLE INCREASES SURVIVAL VIA DIFFERENT MECHANISMS IN TWO RAT SEPSIS MODELS

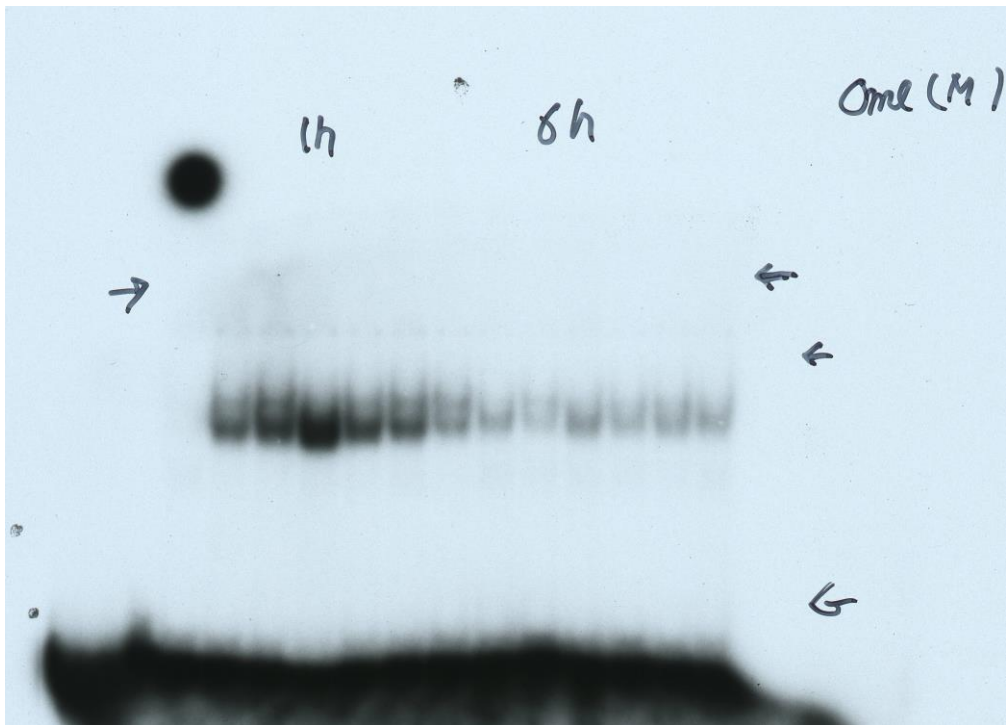
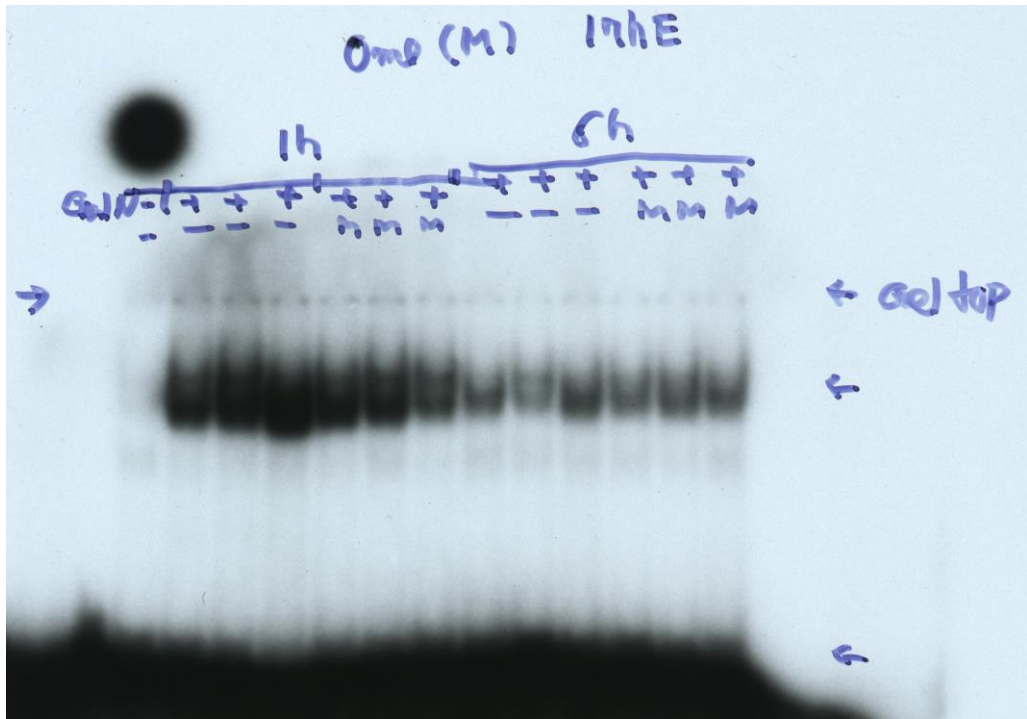
Masaya Kotsuka M.D. *, Yuki Hashimoto M.D., Ph.D. *, Richi Nakatake M.D., Ph.D. *, Tetsuya Okuyama Ph.D. **†, Masahiko Hatta M.D. *, Terufumi Yoshida M.D. *, Tadayoshi Okumura Ph.D. **†, Mikio Nishizawa M.D., Ph.D. ‡, Masaki Kaibori M.D., Ph.D. * and Mitsugu Sekimoto M.D., Ph.D. *

* Department of Surgery, Kansai Medical University, 2-5-1 Shinmachi, Hirakata, Osaka 573-1010, Japan

† Research Organization of Science and Technology, Ritsumeikan University, 1-1-1 Nojihigashi, Kusatsu, Shiga 525-8577, Japan

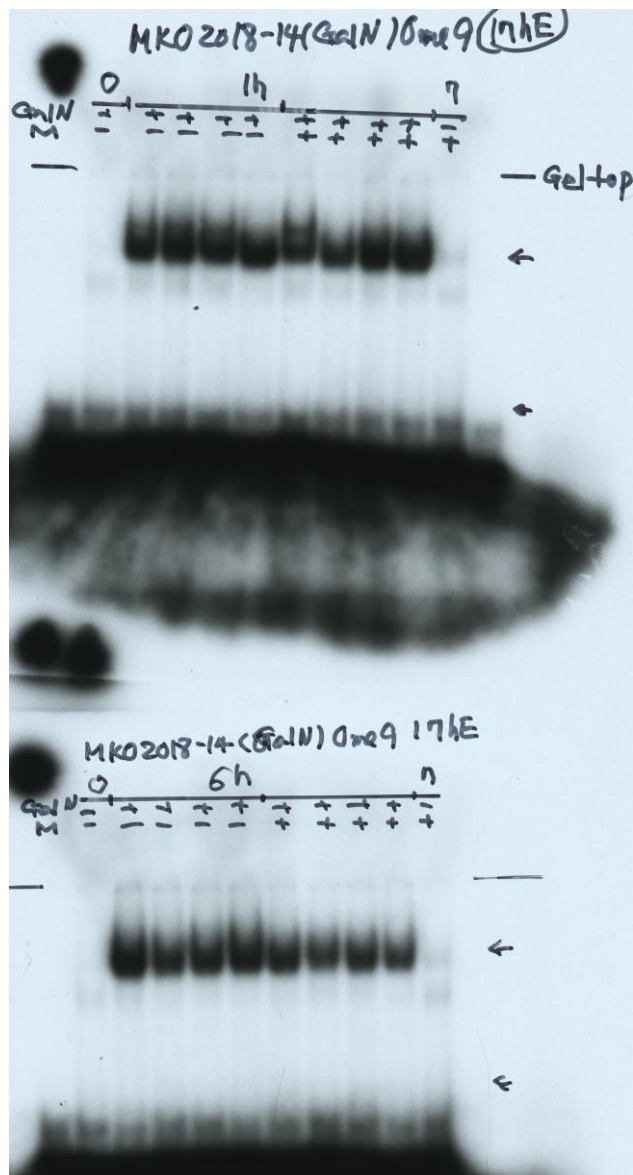
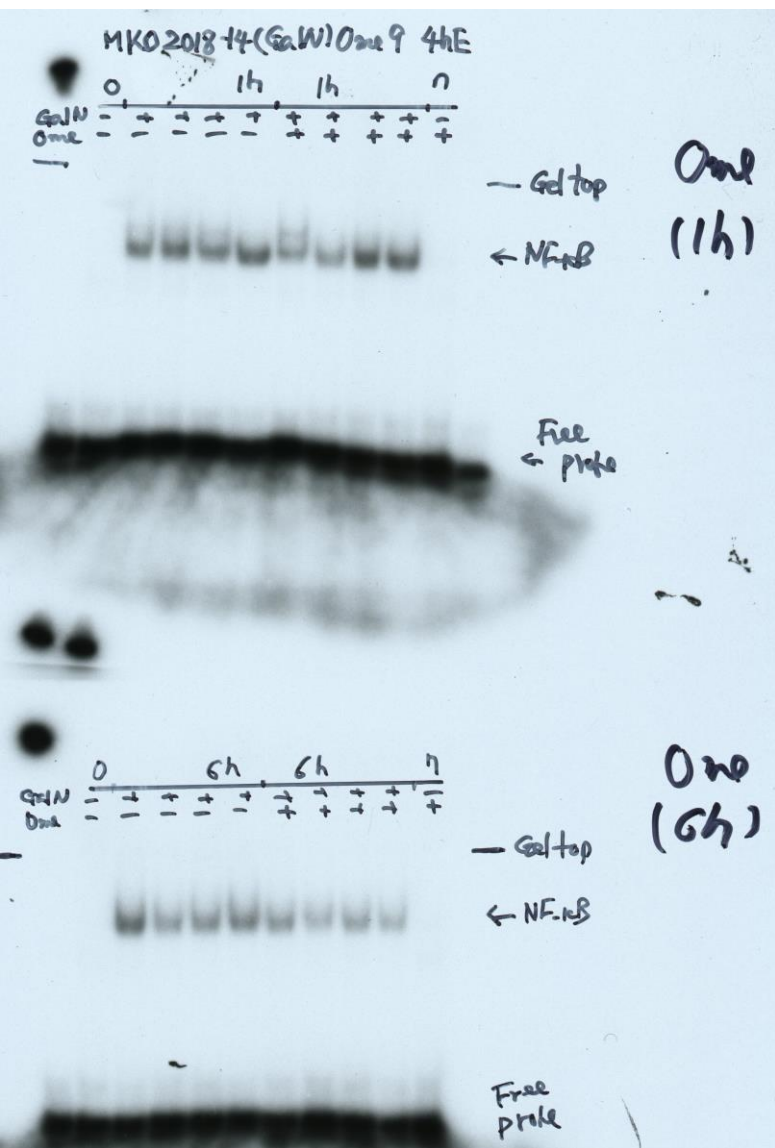
‡ Department of Biomedical Sciences, College of Life Sciences, Ritsumeikan University, 1-1-1 Nojihigashi, Kusatsu, Shiga 525-8577, Japan

Vivo (GalN/LPS & PH/LPS)
Fig. 3A (NF- κ B)

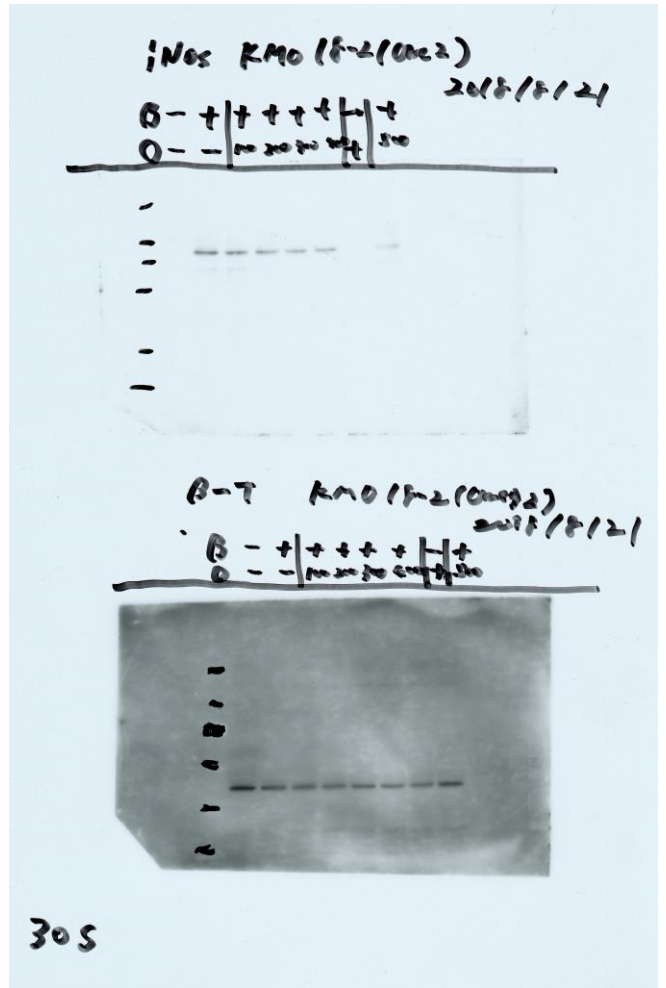
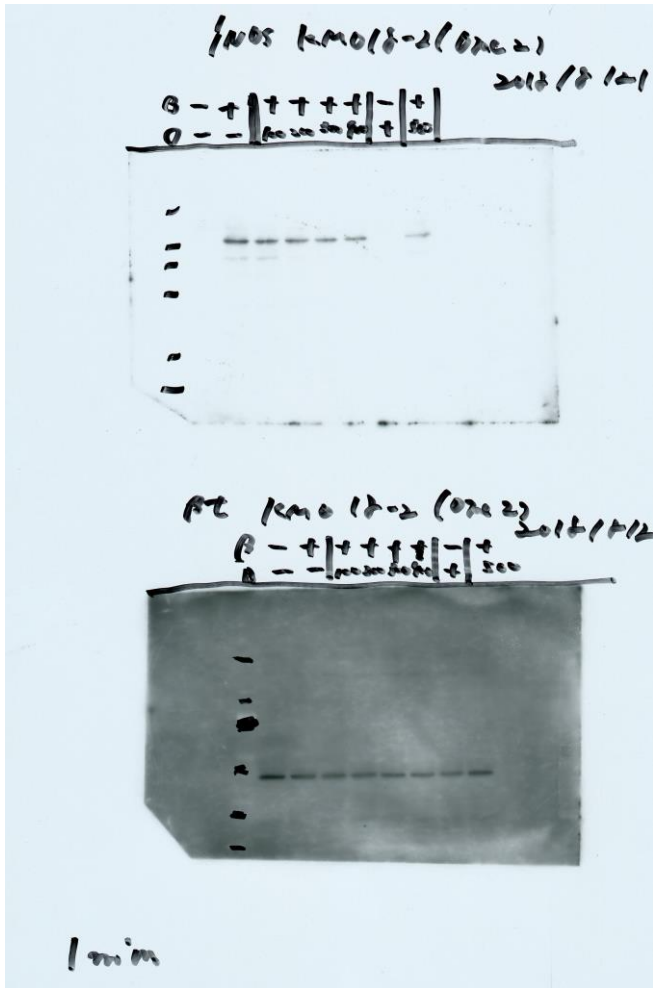


Vivo (GalN/LPS & PH/LPS)

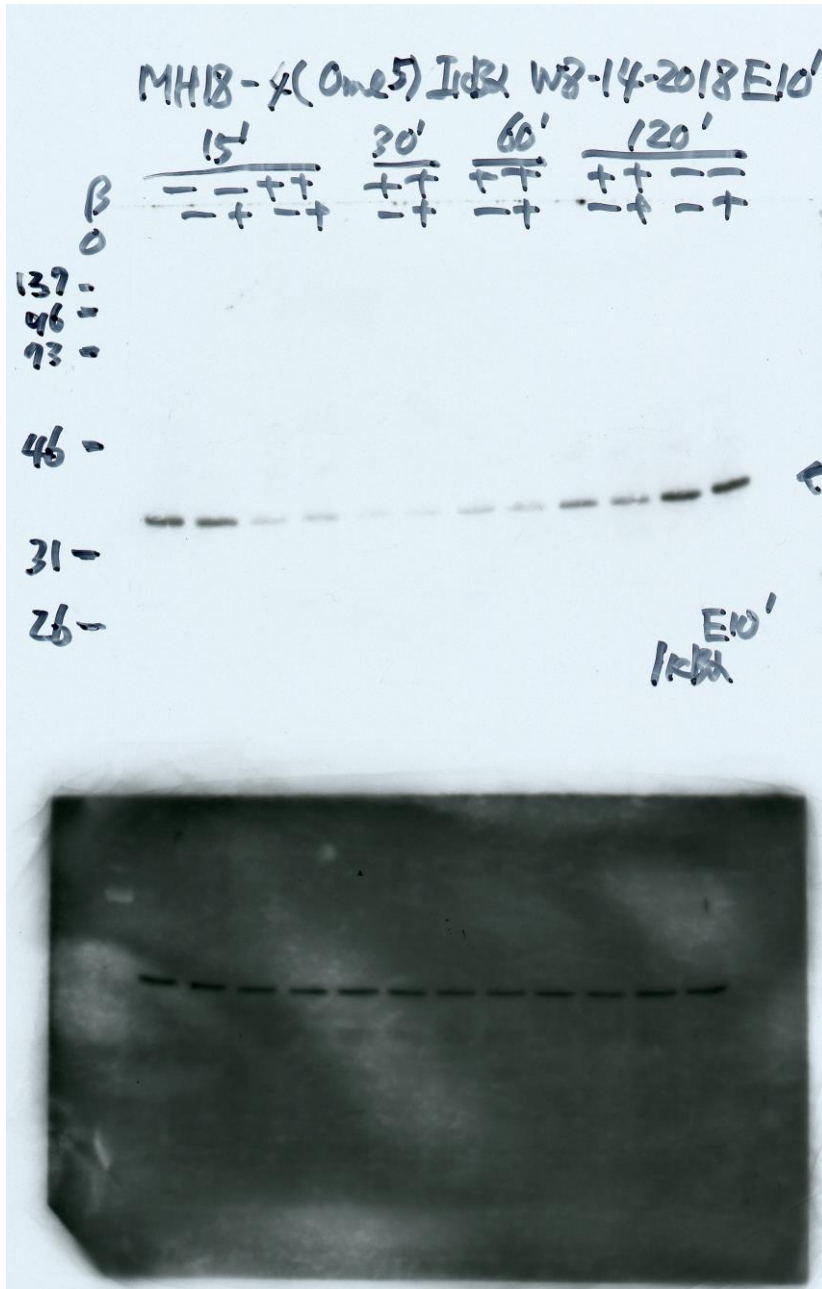
Fig. 3B (NF-κB)



Primary cultured hepatocytes
 Fig. 7A (iNOS & β T)



Primary cultured hepatocytes
Fig. 8A (I κ B α & β T)



Primary cultured hepatocytes
 Fig. 8B1 (EMSA/NF- κ B)

