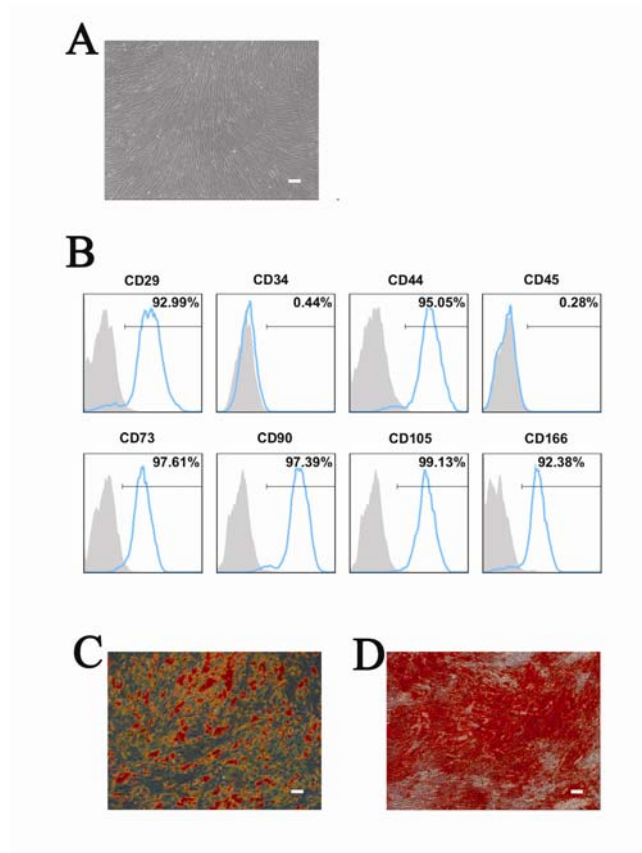


Supplemental Digital Content (SDC)



**Figure S1.** Characterisation of human MSCs. A: The morphology of human MSCs (passage 8) as shown by phase contrast microscopy. B: Flow cytometry analysis of cell surface markers of human MSCs. C: Oil red O staining showing adipogenic differentiation of human MSCs. D: Alizarin red S staining showing osteogenic differentiation of human MSCs. Scale bar = 100  $\mu$ m.