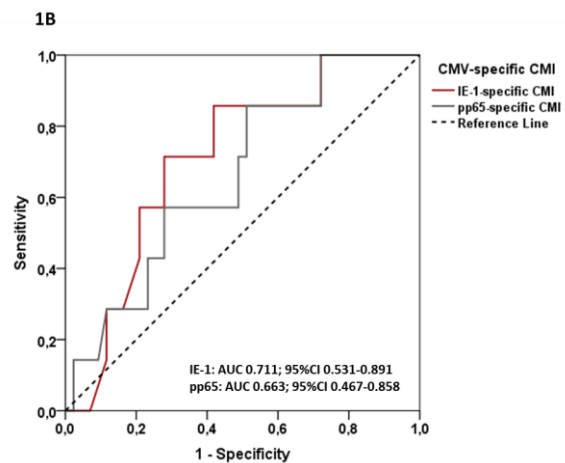
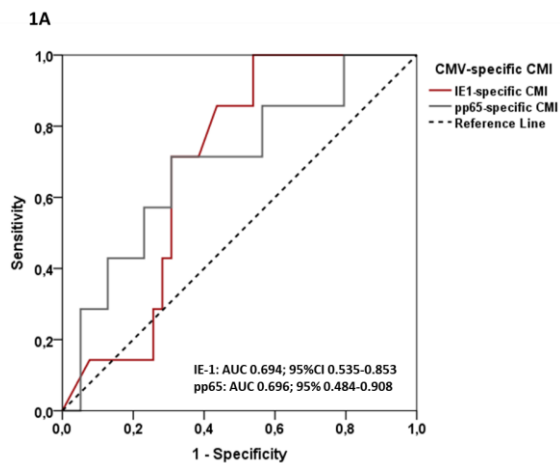


Supplementary figure 1: Receiver operating characteristic (ROC) curves of pre-transplant anti IE-1 and pp65 T-cell frequencies predicting CMV infection regarding the type of induction therapy.

1A: Area under the curve (AUC) was ~~0.697~~ with 95%CI 0.535-0.853 ($p=0.105$) for IE-1 and 0.696 with 95%CI 0.484-0.908 ($p=0.102$) for pp65, for the prediction of CMV infection in rATG-treated patients.

1B: Area under the curve (AUC) was 0.711 with 95%CI 0.531-0.891 ($p=0.076$) for IE-1 and 0.663 with 95%CI 0.467-0.858 ($p=0.171$) for pp65, for the prediction of CMV infection in anti-IL2RA-treated patients.

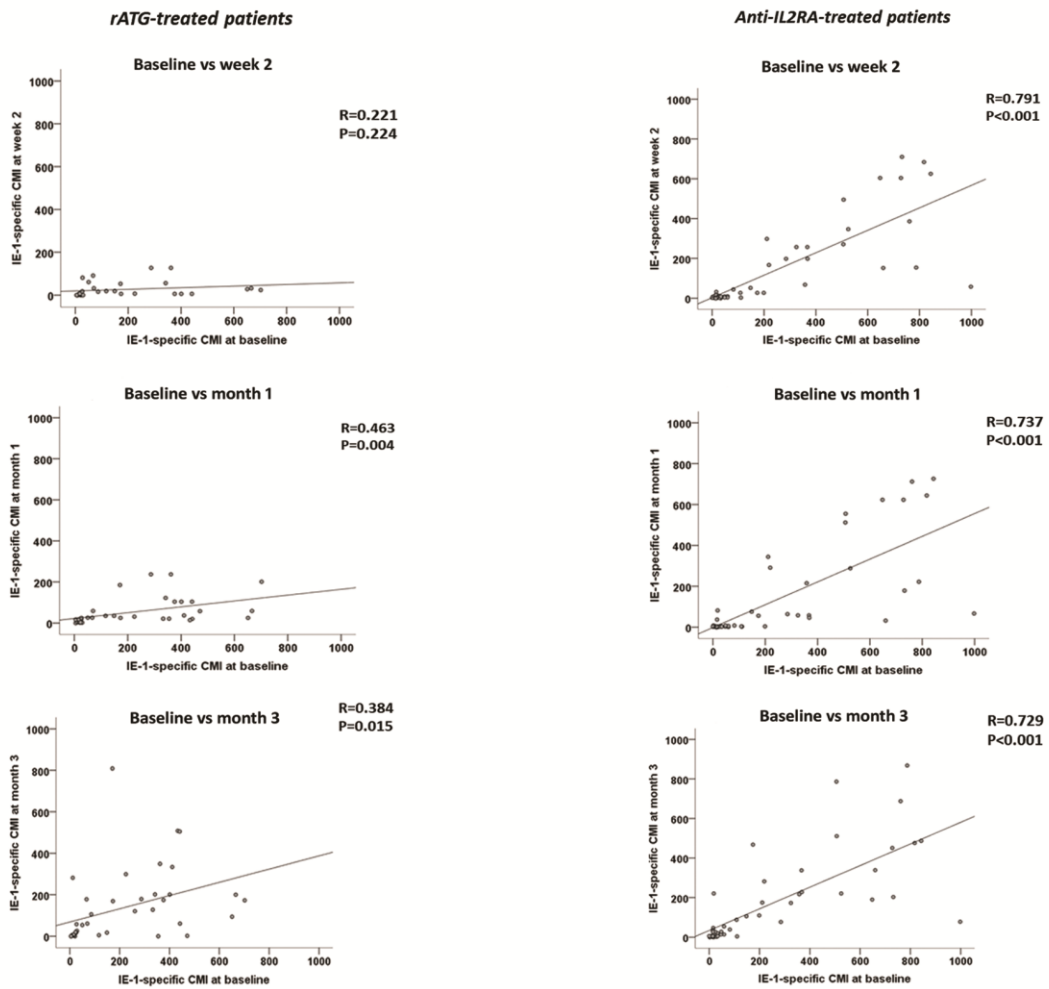


Supplementary figure 2: Correlation between pre-transplant CMV-specific CMI and different time points after transplantation according to different induction therapies.

2A: Correlation between pre-transplant IE-1(CMV)-specific CMI and different time points after transplantation according to different induction therapies

2B: Correlation between pre-transplant pp65(CMV)-specific CMI and different time points after transplantation according to different induction therapies

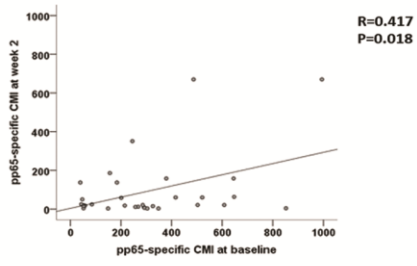
2A



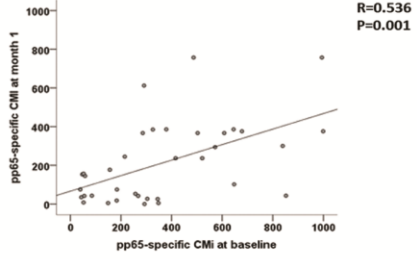
2B

rATG-treated patients

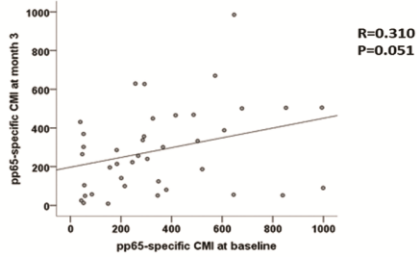
Baseline vs week 2



Baseline vs month 1

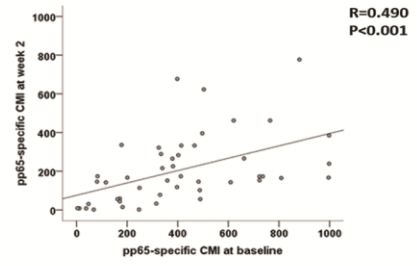


Baseline vs month 3

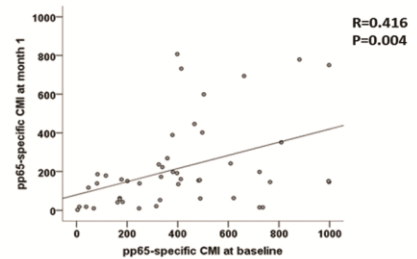


Anti-IL2RA-treated patients

Baseline vs week 2



Baseline vs month 1



Baseline vs month 3

