

Figure S1, SDC: Differential levels of mRNA transcripts of 9 genes in plasma exosomes among AMR, CMR, DES Control, and non-DES Control patient groups when only 1 plasma sample closest to biopsy was used for analysis for each of the patients in AMR and CMR groups. Horizontal long and short lines indicate mean \pm standard deviation of results of 18 AMR, 8 CMR, 18 DES Control and 20 non-DES Control patients, respectively. Statistical analysis results by MW test for each gene are indicated on each panel.

** $p < 0.01$, * $0.01 \leq p < 0.05$; # $0.05 \leq p < 0.10$.

Fig. S1

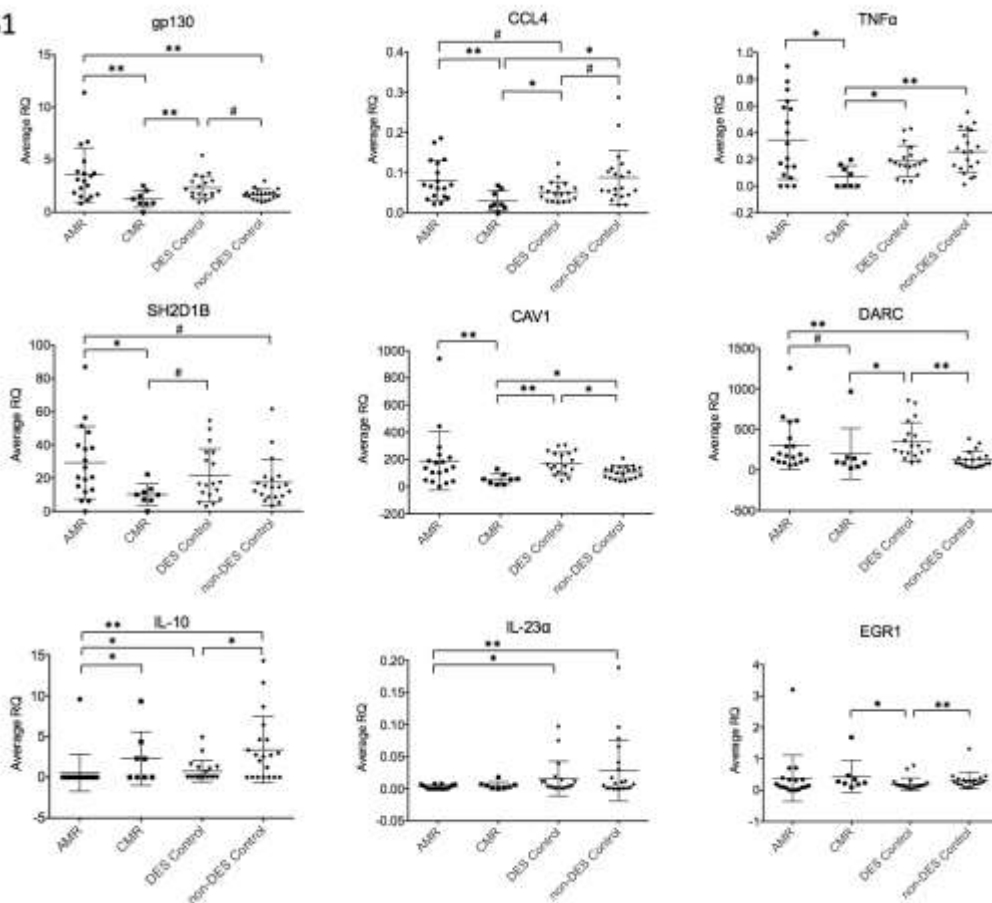


Figure S2, SDC: Differential gene scores based on the mRNA transcript levels of 4 selected genes (gp130, SH2D1B, TNF α and CCL4) in plasma exosomes among AMR, CMR, DES Control, and non-DES Control patient groups when only 1 plasma sample closest to biopsy was used for analysis for each of the patients in AMR and CMR groups. Horizontal long and short lines indicate mean \pm standard deviation of results of 18 AMR, 8 CMR, 18 DES Control and 20 non-DES Control patients, respectively. Statistical analysis results by MW test for each gene are indicated on each panel.

** $p < 0.01$, * $0.01 \leq p < 0.05$; # $0.05 \leq p < 0.10$.

Fig. S2

