

SUPPLEMENTAL MATERIAL

Figure S1: Study population selection flowchart

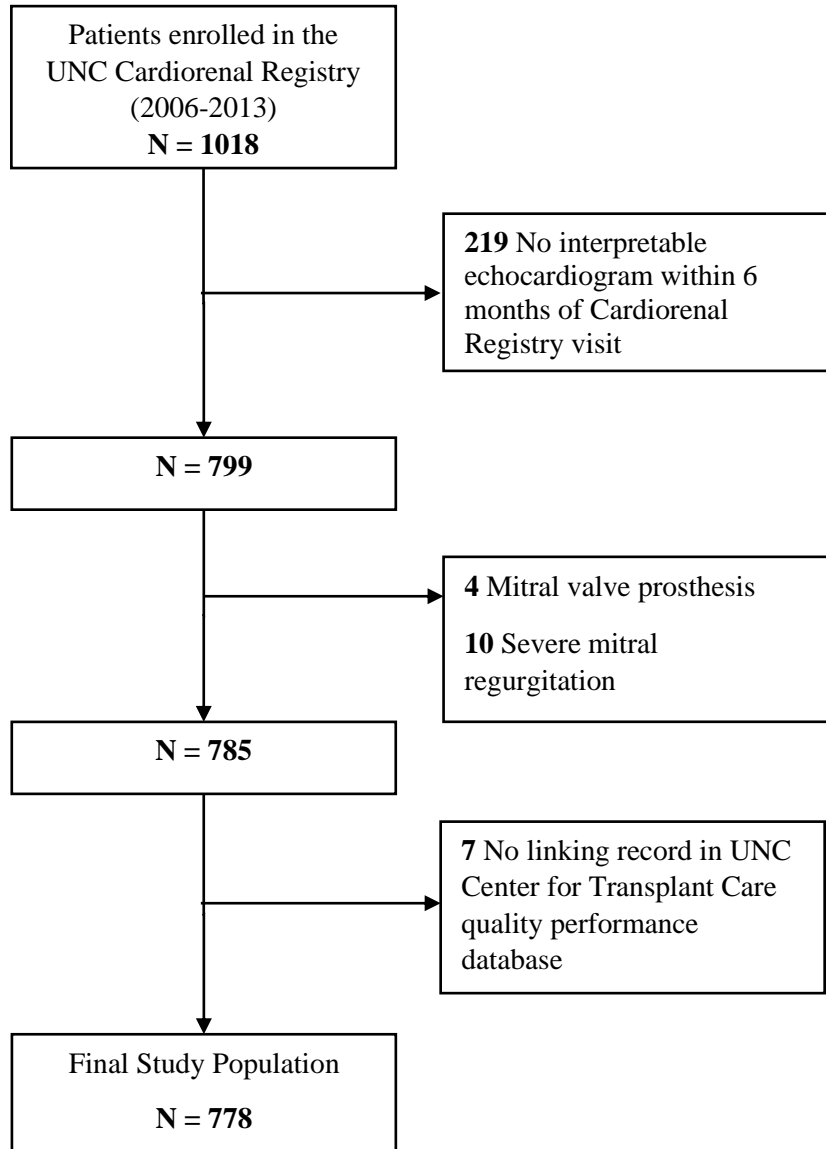
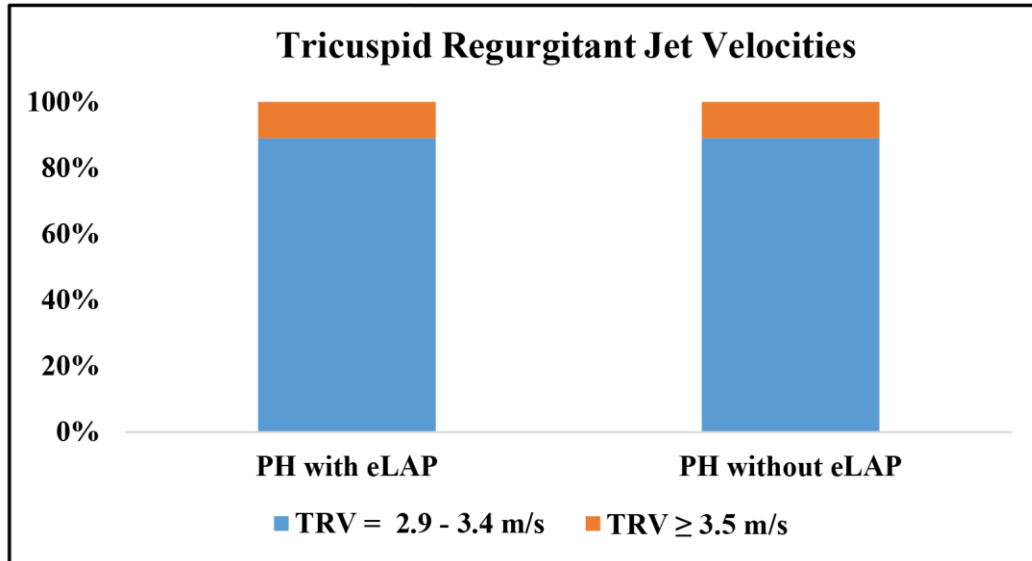
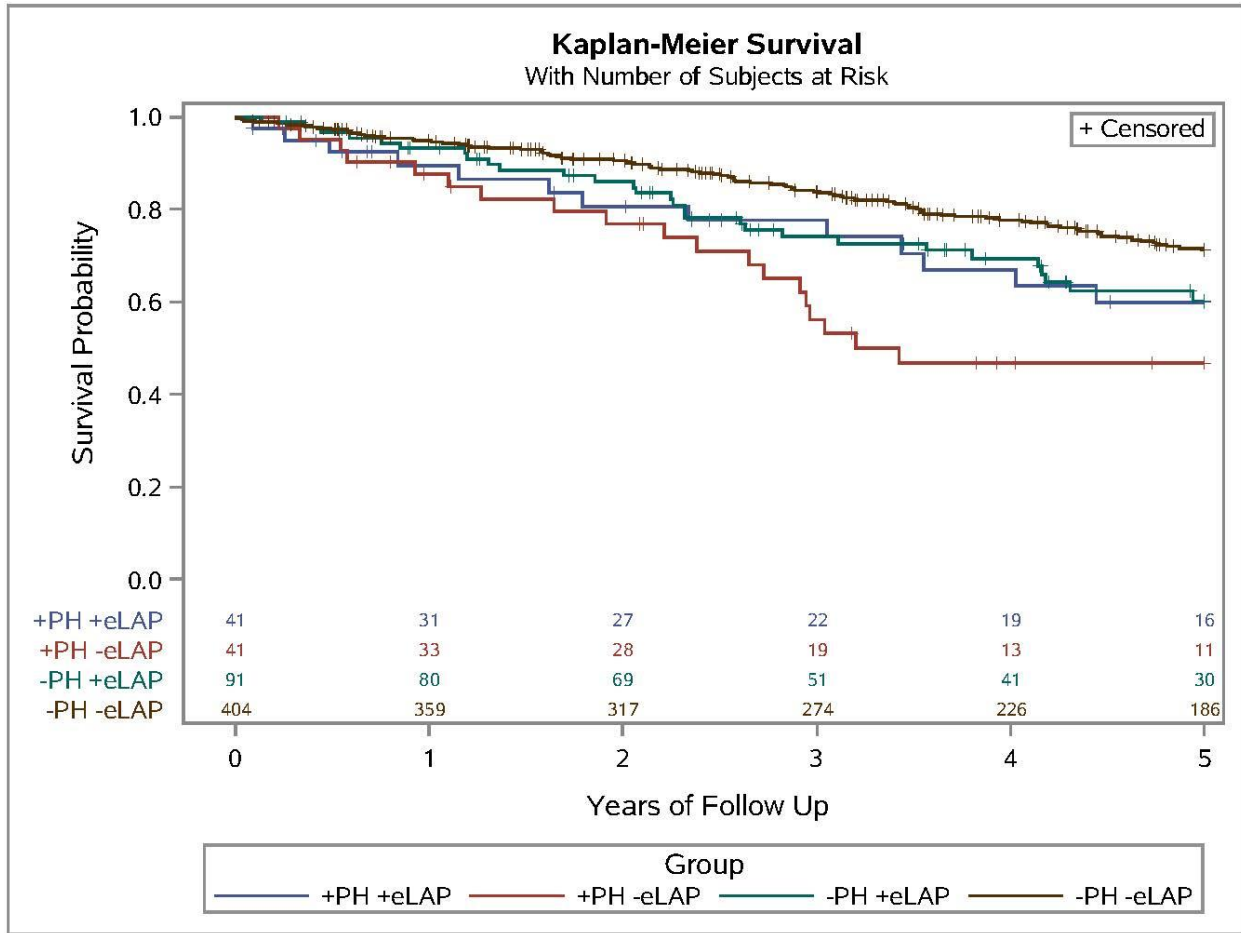


Figure S2: Proportion of patients identified with pulmonary hypertension and a tricuspid regurgitant jet ≥ 3.5 m/s, stratified by presence or absence of elevated left atrial pressure. The UNC Cardiorenal Registry, 2006-2013.



Footnote: Abbreviations: PH = pulmonary hypertension, eLAP = elevated left atrial pressure, TRV = tricuspid regurgitant jet

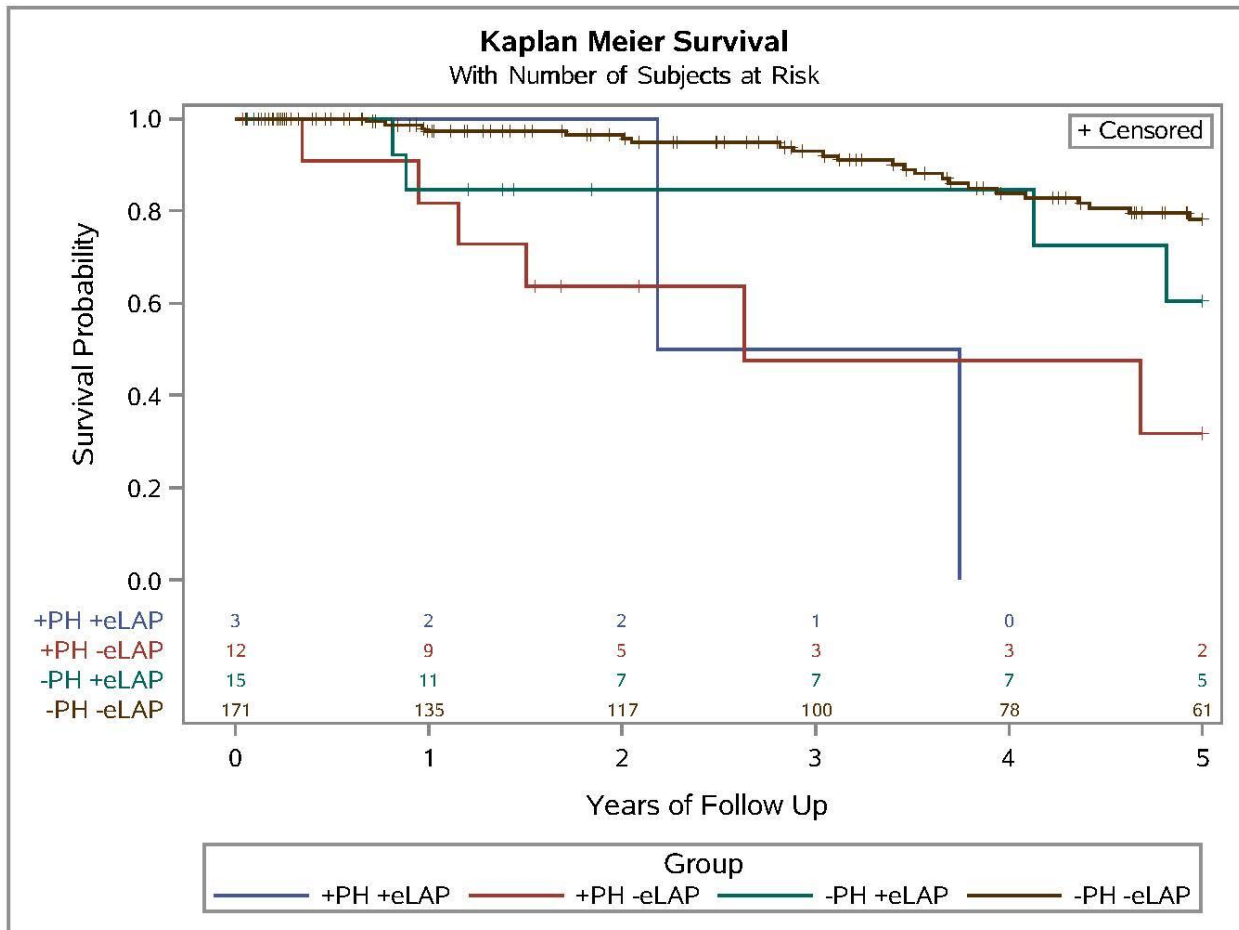
Figure S3: Unadjusted 5-year survival probabilities since the time of referral for kidney transplantation, limited to patients on dialysis at the time of referral. Comparisons are between patients with vs. without pulmonary hypertension and present vs. absent elevated left atrial pressure. The UNC Cardiorenal Registry.



Footnote:

- +PH +eLAP = pulmonary hypertension with elevated left atrial pressure
- +PHT -eLAP = pulmonary hypertension without elevated left atrial pressure
- PHT +eLAP = no pulmonary hypertension but elevated left atrial pressure
- PHT -eLAP = no pulmonary hypertension and normal left atrial pressure

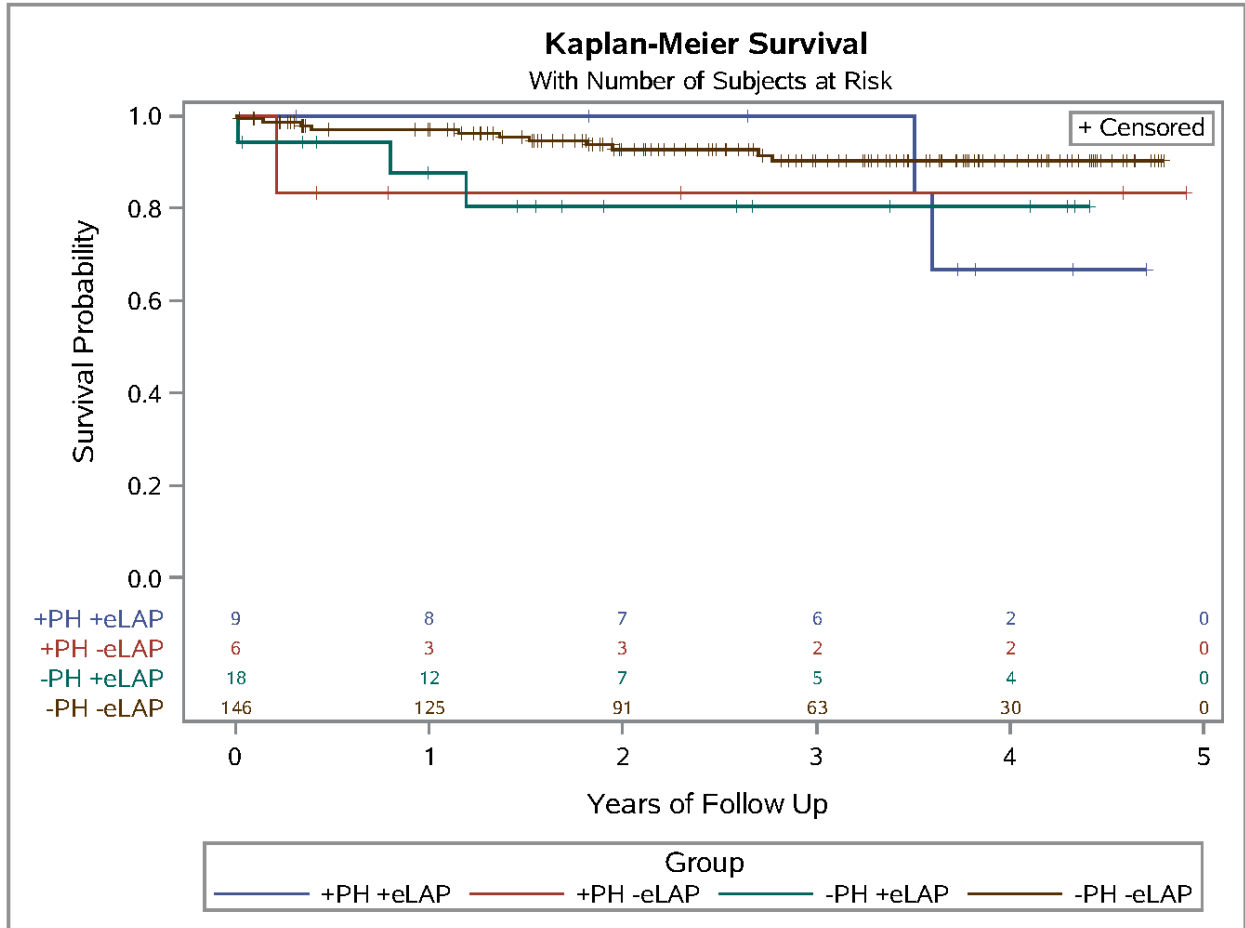
Figure S4: Unadjusted 5-year survival probabilities since the time of referral for kidney transplantation, limited to patients not on dialysis at the time of referral, with follow up censored at the time of hemodialysis initiation. Comparisons are between patients with vs. without pulmonary hypertension and present vs. absent elevated left atrial pressure. The UNC Cardiorenal Registry.



Footnote:

- +PH +eLAP = pulmonary hypertension with elevated left atrial pressure
- +PHT -eLAP = pulmonary hypertension without elevated left atrial pressure
- PHT +eLAP = no pulmonary hypertension but elevated left atrial pressure
- PHT -eLAP = no pulmonary hypertension and normal left atrial pressure

Figure S5: Unadjusted posttransplantation survival probabilities comparing patients with vs. without pretransplant pulmonary hypertension and present vs. absent elevated left atrial pressure. The UNC Cardiorenal Registry.



Footnote:

- +PH +eLAP = pulmonary hypertension with elevated left atrial pressure
- +PHT -eLAP = pulmonary hypertension without elevated left atrial pressure
- PHT +eLAP = no pulmonary hypertension but elevated left atrial pressure
- PHT -eLAP = no pulmonary hypertension and normal left atrial pressure