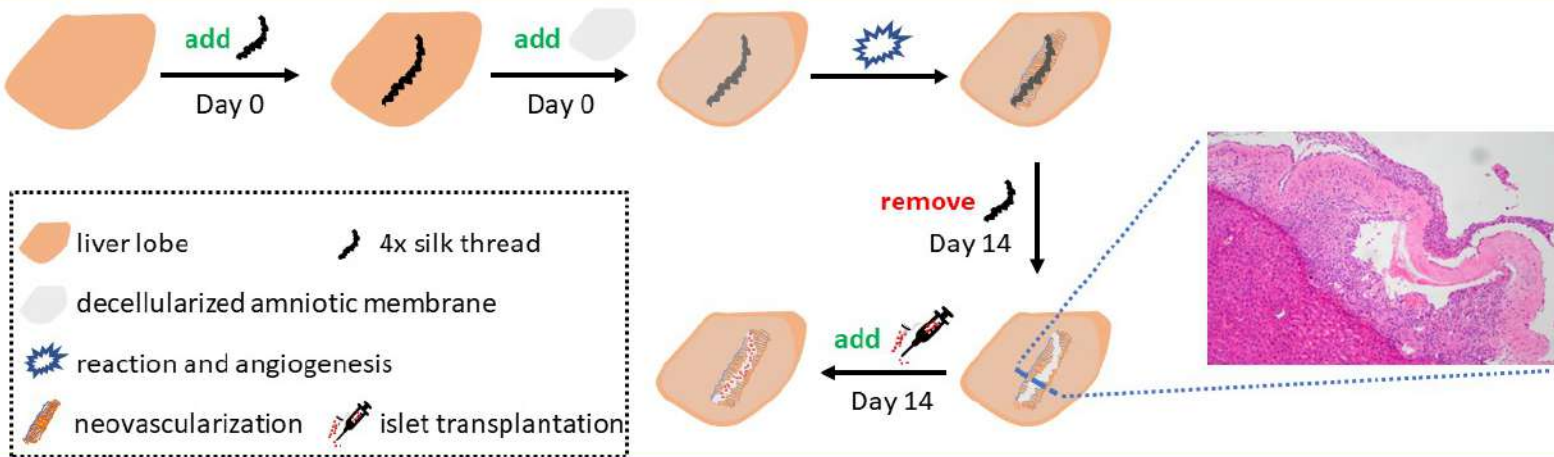


A Prevascularized Sinus Tract on the Liver Surface for Islet Transplantation



By attaching a decellularized amniotic membrane to the surface of mouse liver and temporarily embedding a 4× silk thread, the prevascularized sinus tract formed on the liver surface has a favorable local microenvironment for islet grafts.

Feng Li et al. *Transplantation*. May 2022

@TransplantJrnl

Copyright © 2019 Wolters Kluwer Health, Inc. All rights reserved

Transplantation

