

Supplemental Digital Content

Prediction of Renal Function in Living Kidney Donors and Recipients of Living Donor Kidneys Using Quantitative Histology

Figure S1.

Linear relations between percentage globally sclerotic glomeruli in the nondonated kidney and the corresponding GFR at 1-year follow-up in donors (**A**), and percentage globally sclerotic glomeruli in the donated kidney and the corresponding GFR at 1-year follow-up in recipients (**B**). GFR, glomerular filtration rate.

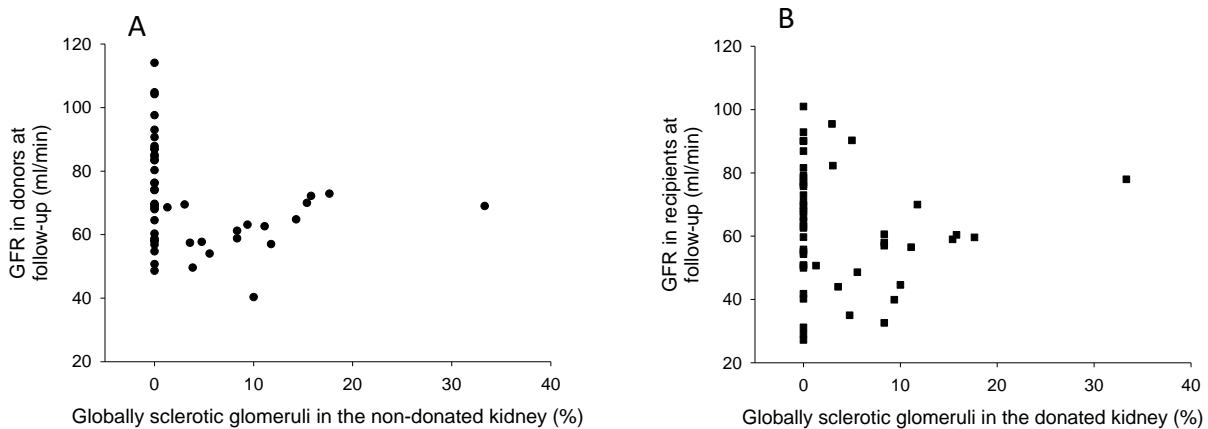


Figure 2.

Linear relations between arteriolar media:lumen ratio in the nondonated kidney and the corresponding GFR at 1-year follow-up in donors (**A**), and arteriolar media:lumen ratio in the donated kidney and the corresponding GFR at 1-year follow-up in recipients (**B**). GFR, glomerular filtration rate.

