

Bone Mineral Density and Aortic Calcification: Evidence for a Bone-Vascular Axis after Kidney Transplantation

Introduction

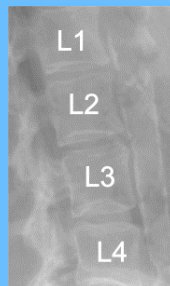
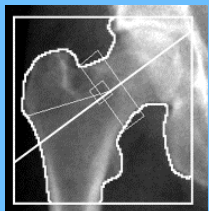
Chronic Kidney Disease –
Mineral and Bone Disorders



Potentially linking bone disease with
vascular calcification
post-kidney transplant?

Dual X-ray absorptiometry

Bone mineral
density (BMD)
&
Abdominal aortic
calcification (AAC)



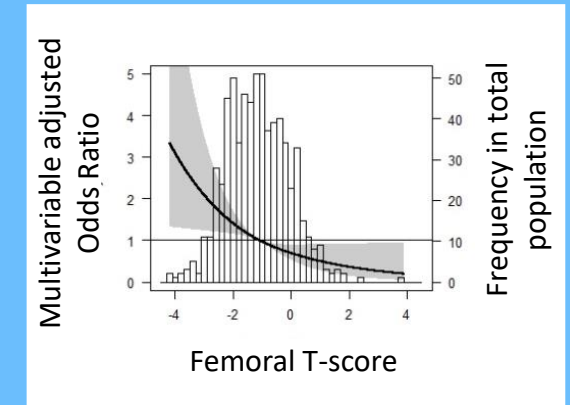
Methods

- ✓ 678 kidney transplant recipients (KTR)
- ✓ DXA-scan < 6 months post-transplant
- ✓ Areal BMD at the proximal femur
- ✓ 8-points AAC-score
 - ✓ 1-3 points low-AAC
 - ✓ 4-8 points high-AAC



Results

BMD disorders → in **54%**
AAC → in **39%**



Lower BMD independently
associated with higher risk for
high-AAC in KTR

Sotomayor CG & Benjamins S et al. *Transplantation*. 2021

@TransplantJrnl

Copyright © 2021 Wolters Kluwer Health, Inc. All rights reserved

Transplantation

