

Supplementary Appendix:

Evaluation of Malnutrition Risk in Lung Transplant Candidates Using the Nutritional Risk Index

Karan Chohan, BSc,¹ Jeff Park, BSc,¹ Sarah Dales, RD,² Rhea Varughese, MD,^{3,4} Lisa Wickerson, PT, MSc, PhD,⁵ Lianne G. Singer, MD,^{1,5,6} Brooke Stewart, RD,² and Dmitry Rozenberg, MD, PhD^{1,5,6}

¹ Faculty of Medicine, University of Toronto, Toronto, ON, Canada

² Multi-Organ Transplant Program, Nutrition, University Health Network, Toronto, ON, Canada,

³ Medicine, University of Calgary, Calgary, AB, Canada

⁴ Medicine, University of Alberta, Edmonton, AB, Canada

⁵ Toronto Lung Transplant Program, University Health Network, University of Toronto, ON, Canada

⁶ Medicine, Respiriology, Toronto General Hospital Research Institute, University of Toronto, Toronto, ON, Canada.

TABLES:

Table S1: Characteristic of Eligible Lung Transplant Candidates Included in the Study Compared to those Excluded

Table S2: Posttransplant Outcomes based On Nutritional Risk Index in those Surviving to Hospital Discharge in Patients without Cystic Fibrosis

Table S3: Posttransplant Outcomes based On Nutritional Risk Index in those Surviving to Hospital Discharge in Patients with Cystic Fibrosis

Table S4: Change in Body Weight Posttransplant Based on Pretransplant Body Mass Index Categories

FIGURES:

Figure S1: Differences in Nutritional Risk Index Values between Diagnostic Groups.

Figure S2: Correlations of Nutritional Risk Index with Body Mass Index, Albumin, Body Weight, and Malnutrition Screening Tool at Time of Lung Transplant Assessment.

Figure S3: Spaghetti Plot of Body Weight Change Pretransplant and Posttransplant for Lung Transplant Patients Surviving to Hospital Discharge

Table S1: Characteristic of Eligible Lung Transplant Candidates Included in the Study Compared to those Excluded

Characteristics at Lung Transplant Assessment	Included (n=247)	Excluded (n=36)	p value
Age, Median Years	59 IQR [47-64]	57 [47-62]	0.49
Male Sex, n (%)	142 (57%)	22 (61%)	0.60
Body Mass Index (kg/m ²)	24.8 ± 5.0	26.2 ± 6.0	0.77
Nutritional Risk Index	108 ± 12	109 ± 17	0.70
Interstitial Lung Disease	139 (56%)	18 (50%)	0.25
COPD	50 (20%)	6 (17%)	
Cystic Fibrosis	29 (12%)	6 (17%)	
Pulmonary Arterial Hypertension	13 (5%)	5 (14%)	
Other	16 (6%)	1 (3%)	
Listing Status			0.045
One-Two	216 (88.5%)	27 (75%)	
Rapidly Deteriorating	31 (12.5%)	9 (25%)	
Six-Minute Walk Distance (m)	315 ± 113	335 ± 121	0.40
Median Days from Lung Transplant Assessment to Listing	87 IQR [55-150]	219 [31–300]	0.07

Data are presented as mean ± SD, median with IQR [25-75%] and proportions (%).

Abbreviations: COPD = Chronic Obstructive Pulmonary Disease

Table S2: Posttransplant Outcomes based On Nutritional Risk Index in those Surviving to Hospital Discharge in Patients without Cystic Fibrosis

Parameter	Non-CF Group	Non-CF Median Difference 10 units in NRI (95% CI) (Unadjusted)	p value	Non-CF Median Difference 10 units in NRI (95% CI) (^a Adjusted)	p value
Days of Mechanical Ventilation (n=151)	2 [1-5]	0 (-0.6 to 0)	1.0	-0.4 (-0.6 to 0.02)	0.08
ICU Days (n=157)	4 [2-15]	0 (-0.5 to 0.7)	1.0	-0.5 (-1.3 to 0.3)	0.46
Hospital Stay (Days) (n=157)	25 [17 - 47]	-1.4 (-5.0 to 0.3)	0.50	-3.2 (-4.0 to 0.12)	0.065
Parameter	Non-CF Group	OR for every 10 units NRI (95% CI)	p value	OR for every 10 units NRI (95% CI)	p value
Discharge to Inpatient Rehab vs. Home (n=157)	28/157 (18%)	0.81 (0.55 to 1.21)	0.31	0.74 (0.49 to 1.11)	0.14

Data presented as median with IQR [25-75%] and median difference (95% CI).

^aMultivariable Models adjusted for Age, Sex and Diagnosis

Abbreviations: CF= Cystic Fibrosis; ICU = Intensive Care Unit; NRI = Nutritional Risk Index;

OR = Odds Ratio

Table S3: Posttransplant Outcomes based On Nutritional Risk Index in those Surviving to Hospital Discharge in Patients with Cystic Fibrosis

Parameter	Non-CF Group	CF Median Difference 10 units in NRI (95% CI) (Unadjusted)	p value	CF Median Difference 10 units in NRI (95% CI) (*Adjusted)	p value
Days of Mechanical Ventilation (n=23)	1 [1-3]	-0.2 (-0.6 to 0.2)	0.40	0 (-1.4 to 0)	1.0
ICU Days (n=23)	3 [2-6]	0 (-0.9 to 0.4)	1.0	0 (-0.8 to 1.7)	1.0
Hospital Stay (Days) (n=23)	20 [18-36]	-2.0 (-3.5 to 3.6)	0.62	-0.5 (-5.2 to 3.3)	0.96
Parameter	Non-CF Group	OR for every 10 units NRI (95% CI)	p value	^a OR for every 10 units NRI (95% CI)	p value
Discharge to Inpatient Rehab vs. Home (n=23)	1/23 (4%)	0.40 (0.04 to 3.90)	0.43	--	---

Data presented as median with IQR [25-75%] and median difference (95% CI).

^aMultivariable Models adjusted for Age and Sex.

Discharge disposition not adjusted given small sample size.

Abbreviations: CF= Cystic Fibrosis; ICU = Intensive Care Unit; NRI = Nutritional Risk Index;

OR = Odds Ratio

Table S4: Change in Percent Body Weight Posttransplant Based on Pretransplant Body

Mass Index Categories

Parameter	Univariate Mean Difference in Percent Change in Weight (95% CI)	p	‡ Adjusted Model Mean Difference in Percent Change in Weight (95% CI)	p
^a3 Months Post-Tx Percent Change in Weight (n=176)				
BMI Categories -Normal BMI (18.5-24.9 kg/m ²) -Underweight (< 18.5 kg/m ²) -Overweight (25.0 to 29.9 kg/m ²) -Obese (≥ 30 kg/m ²)	Reference 7.3 (2.6 to 12.1) -2.1 (-5.7 to 1.4) -5.8 (-10.0 to -1.7)	< 0.0001	Reference 5.3 (0.4 to 10.2) -2.5 (-5.9 to 1.0) -5.7 (-9.6 to -1.7)	0.002
^a6 Months Post-Tx Percent Change in Weight (n=172)				
BMI Categories -Normal BMI (18.5-24.9 kg/m ²) -Underweight (< 18.5 kg/m ²) -Overweight (25.0 to 29.9 kg/m ²) -Obese (≥ 30 kg/m ²)	Reference 15.6 (10.1 to 21.2) -3.1 (-7.2 to 1.1) -5.8 (-10.5 to -1.0)	< 0.0001	Reference 14.5 (8.9 to 20.2) -4.5 (-8.5 to -0.6) -6.8 (-11.4 to -2.3)	< 0.0001
^a12 Months Post-Tx Percent Change in Weight (n=155)				
BMI Categories -Normal BMI (18.5-24.9 kg/m ²) -Underweight (< 18.5 kg/m ²) -Overweight (25.0 to 29.9 kg/m ²) -Obese (≥ 30 kg/m ²)	Reference 17.6 (10.8 to 24.4) -2.0 (-7.1 to 3.1) -6.3 (-12.0 to -0.5)	< 0.0001	Reference 16.2 (8.7 to 23.6) -3.3 (-8.5 to 1.8) -7.4 (-13.1 to -1.7)	< 0.0001

Data presented as Mean Difference (95% CI).

^aPercent body weight change taken from last available assessment pretransplant.

‡ Adjusted for Age, Sex and Diagnosis

Abbreviations: BMI = Body Mass Index; Tx = Transplant

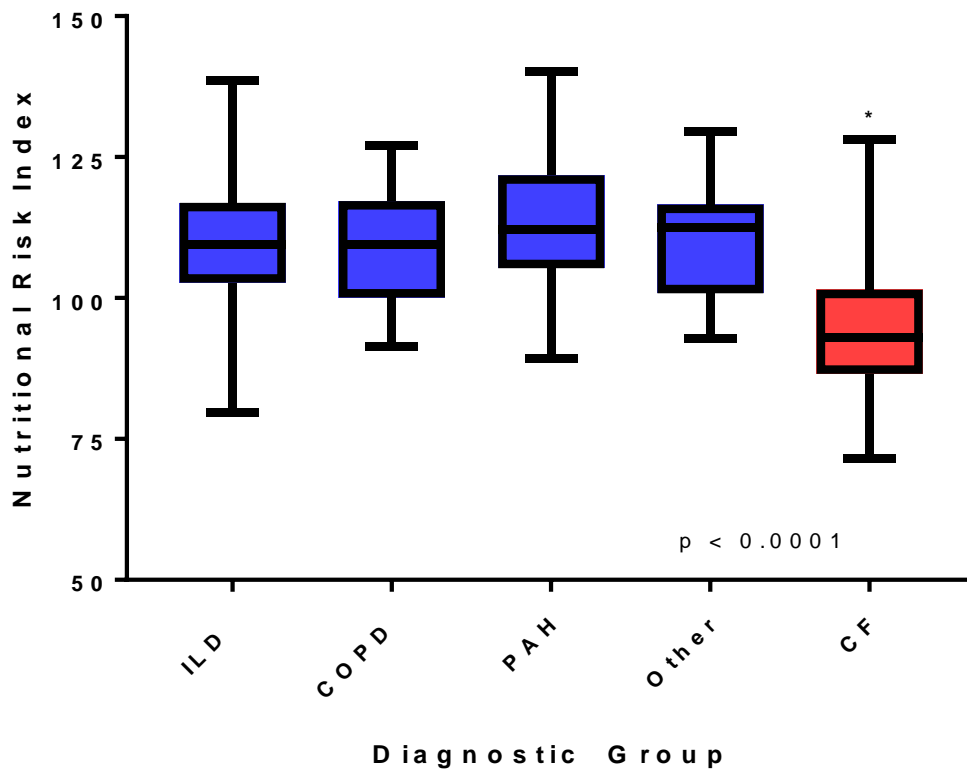
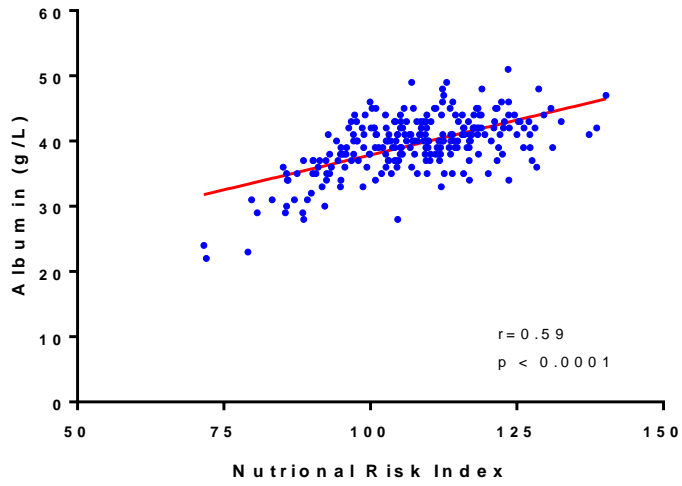


Figure S1: Differences in Nutritional Risk Index Values between Diagnostic Groups.

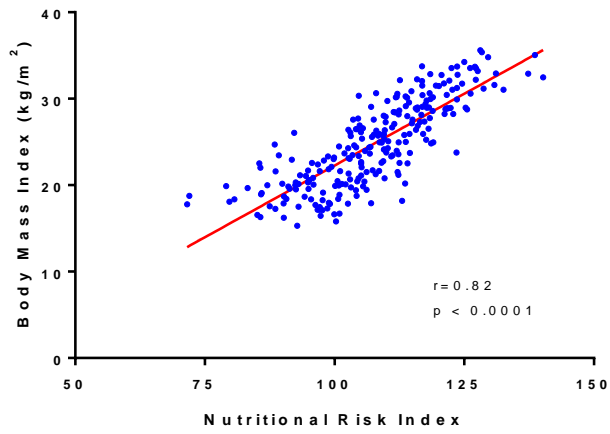
*One-way ANOVA with post hoc Bonferroni correction demonstrated that only the Cystic Fibrosis group had a lower Nutritional Risk Index than the other 4 groups ($p < 0.0001$).

Abbreviations: COPD = Chronic Obstructive Pulmonary Disease; CF = Cystic Fibrosis; ILD = Interstitial Lung Disease; PAH = Pulmonary Arterial Hypertension

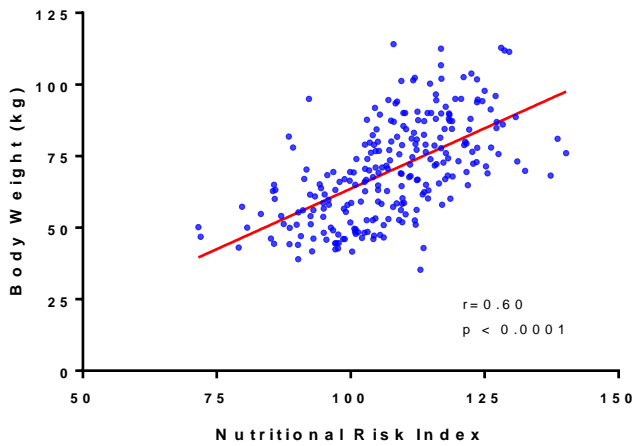
A



B



C



D

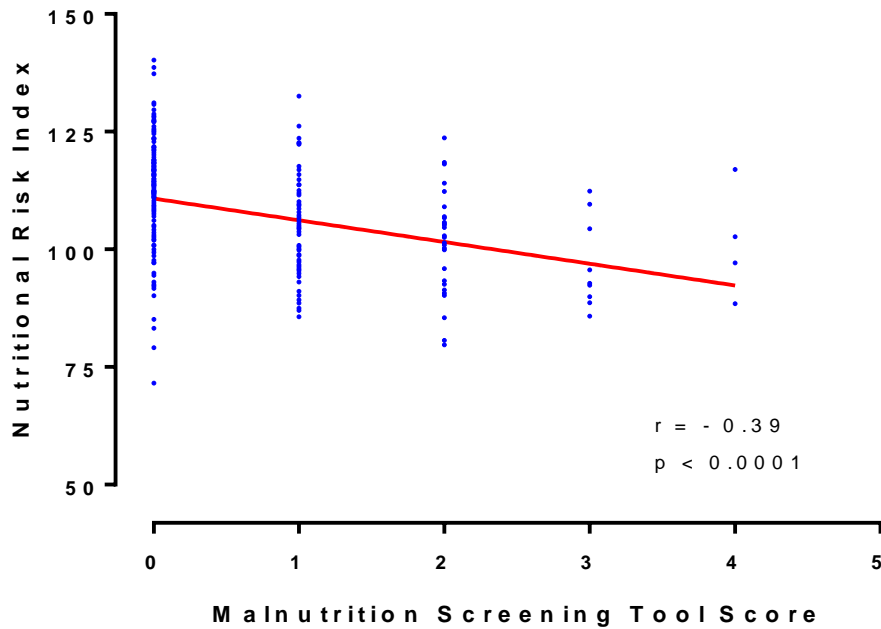


Figure S2: Correlations of Nutritional Risk Index with Body Mass Index, Albumin, Body Weight, and Malnutrition Screening Tool at Time of Lung Transplant Assessment. S2-A: Pearson Correlation between Albumin versus Nutritional Risk Index **S2-B:** Pearson Correlation between Body Mass Index versus Nutritional Risk Index **S2-C:** Pearson Correlation between Body Weight versus Nutritional Risk Index **S2-D:** Spearman Correlation between Nutritional Risk Index and Malnutrition Screening Tool (n=244).

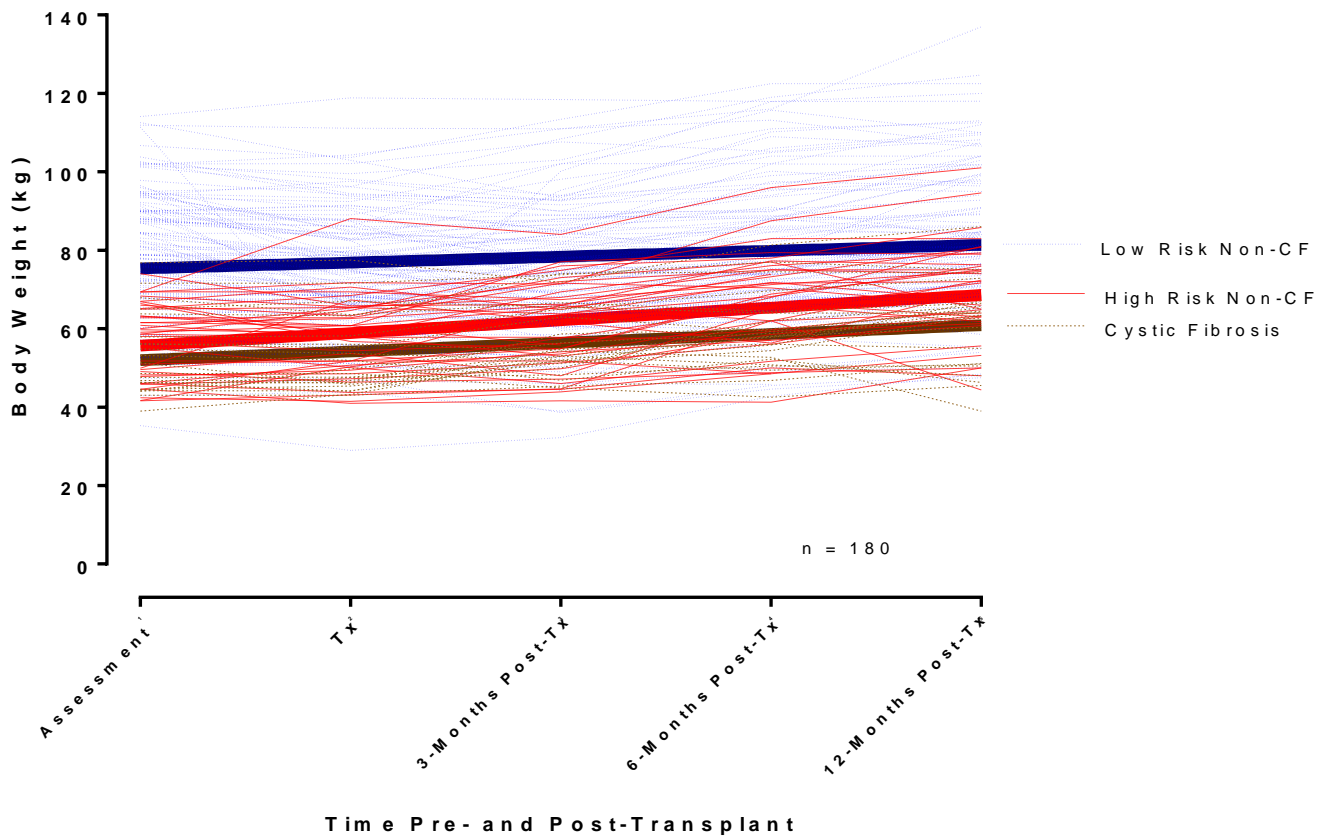


Figure S3: Spaghetti Plot of Body Weight Change Pretransplant and Posttransplant for Lung Transplant Patients Surviving to Hospital Discharge

High and low malnutrition risk for non-cystic fibrosis patients shown, whereas malnutrition risks combined for cystic fibrosis patients.

Abbreviations: CF=Cystic Fibrosis; Tx = Transplant