

Postoperative Ultrasound in Kidney Transplant Recipients: Association between Intrarenal Resistance Index and Cardiovascular Events

Introduction

Post KTx Resistance Index (RI)



associated with

Recipients' cardiovascular characteristics



Potentially associated with post-transplant Cardiovascular Events (CVEs)?

Methods



- 339 KTx recipients
- RI < 24h after KTx
- RI cut-off 0.70



Primary Outcome
CVEs

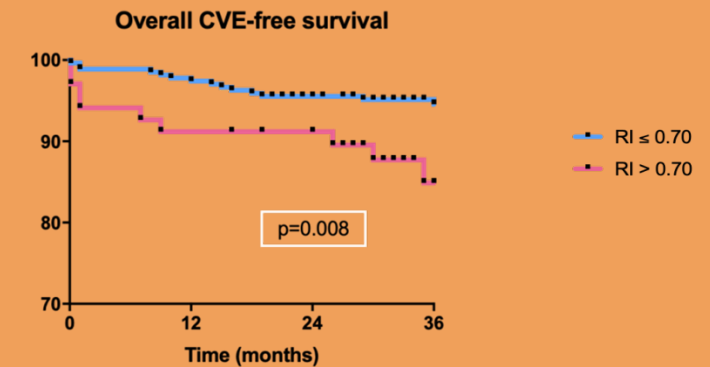


Results

Patients with a postoperative RI > 0.70



1. worse CVE-free survival
2. independently associated with CVEs



A. van de Kuit et al. *Transplantation Direct*. May, 2020

@TransplantJrnl

Copyright © 2019 Wolters Kluwer Health, Inc. All rights reserved

Transplantation
DIRECT



The Transplantation Society