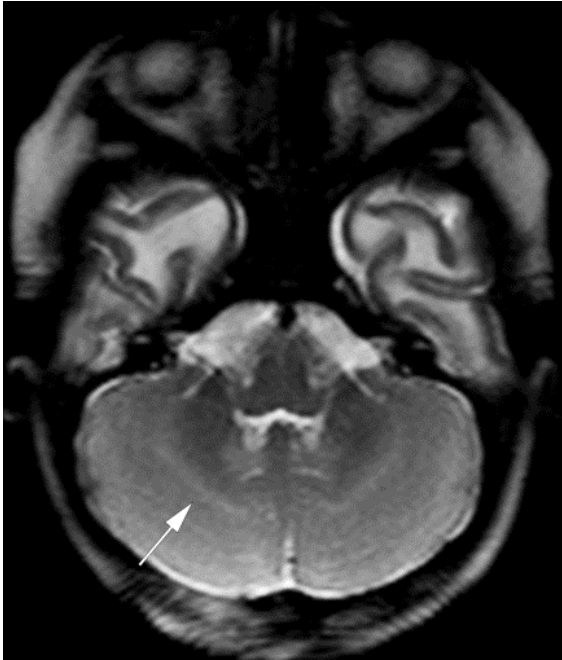


Figure e-1. Hyperintense cerebellar rim in MLC2B



MRI findings in an MLC2B patient at the age of 5 months. The T₂-weighted axial image of the cerebellum shows some delay in myelination, characterized by a mildly hyperintense rim of the subcortical cerebellar white matter, while the cerebellar white matter is otherwise adequately myelinated, as indicated by the low signal intensity.