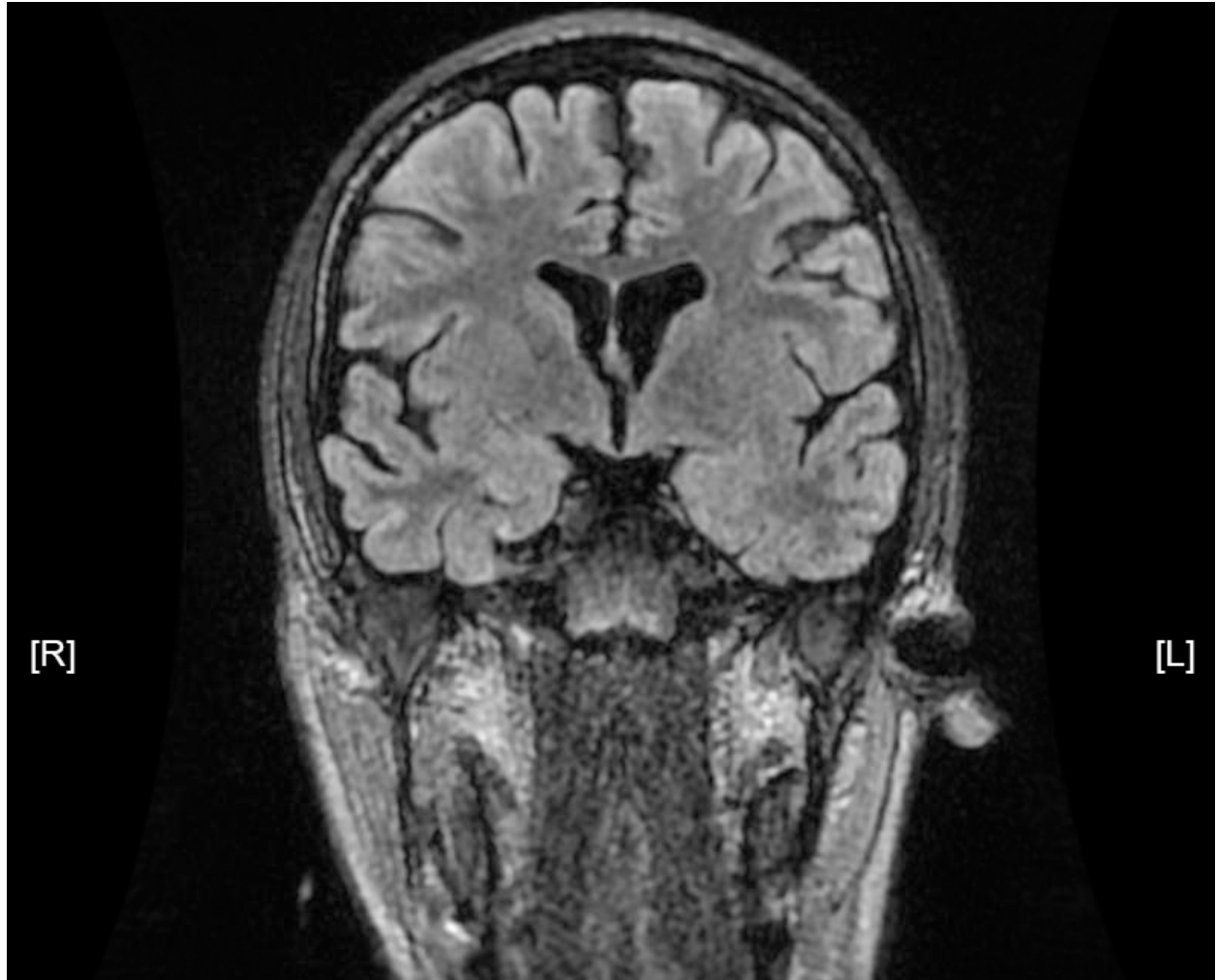
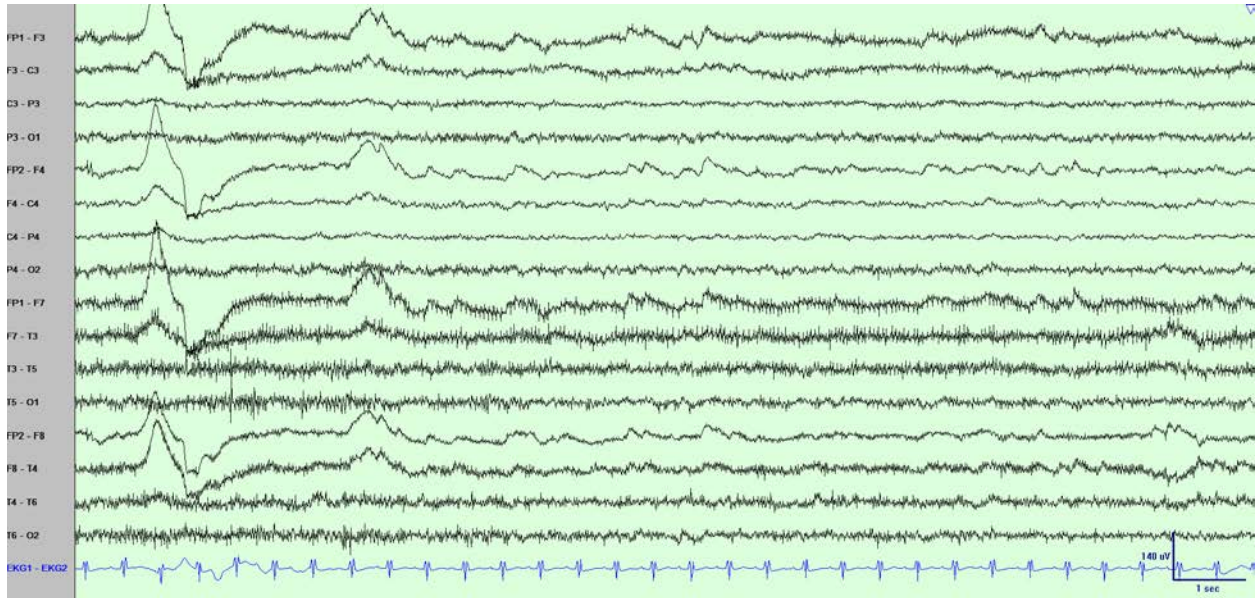


Figure e-1. Magnetic resonance imaging of the head: T2-weighted coronal fluid attenuated inversion recovery (FLAIR) image.



The patient did not have evidence of mesial temporal sclerosis or any potentially epileptogenic lesion.

Figure e-2. Electroencephalography (EEG) bipolar montage showing generalized slowing with superimposed muscle artifact.



Low frequency filter: 1 Hz, high frequency filter: 70 Hz, notch frequency: 60 Hz.