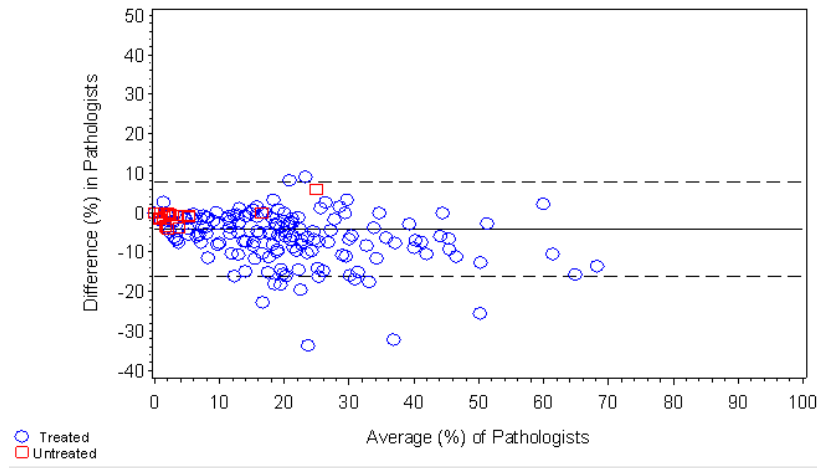
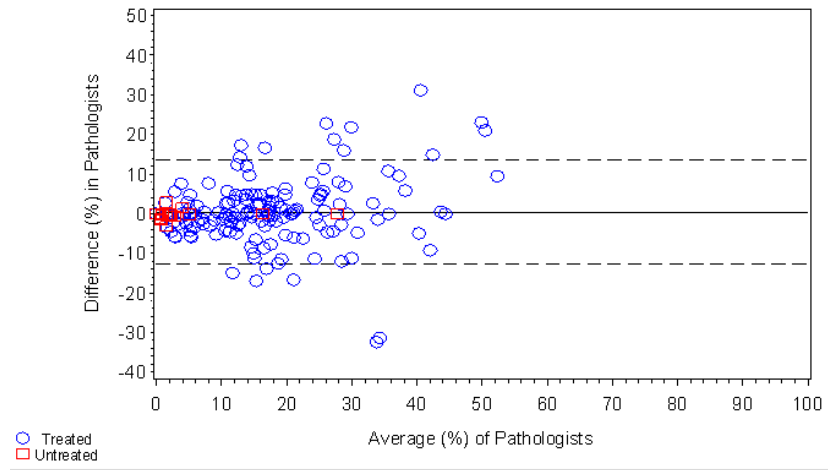


**Figure e-1. Bland-Altman plot percent dystrophin-positive fibers, treated and untreated, rater 1 vs rater 2.**



**Figure e-2. Bland-Altman plot percent dystrophin-positive fibers, treated and untreated, rater 1 vs rater 3.**



**Figure e-3. Bland-Altman plot percent dystrophin-positive fibers, treated and untreated, rater 2 vs rater 3.**

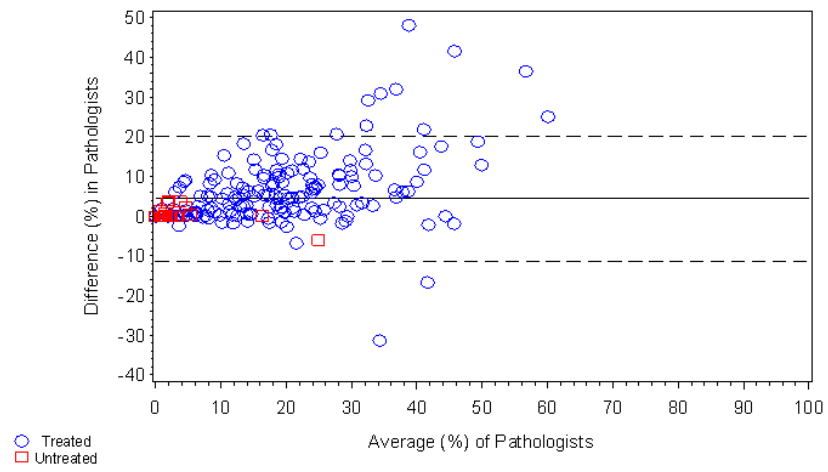
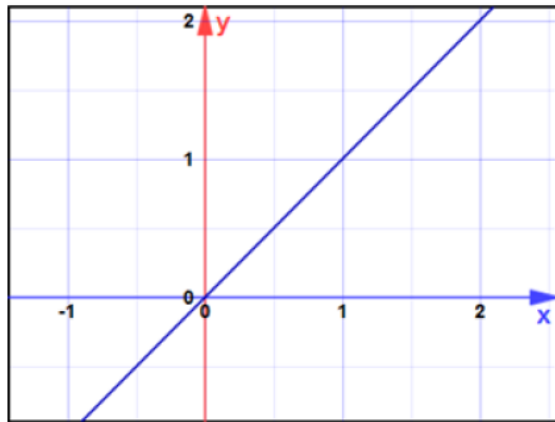
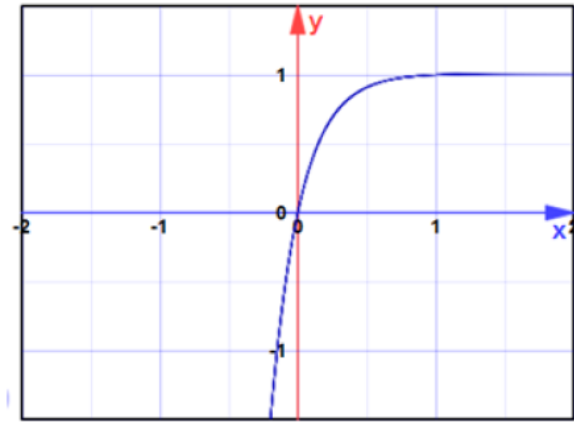


Figure e-4. Image inversion to produce Invert Base100 images.



Invert Image ( $Y=X$ )



Invert Base100  
( $Y = (1 - 100^{-x}) / (1 - 100^{-1})$ )