

A 51 year-old female with  
diplopia

# Teaching NeuroImages

*Neurology*

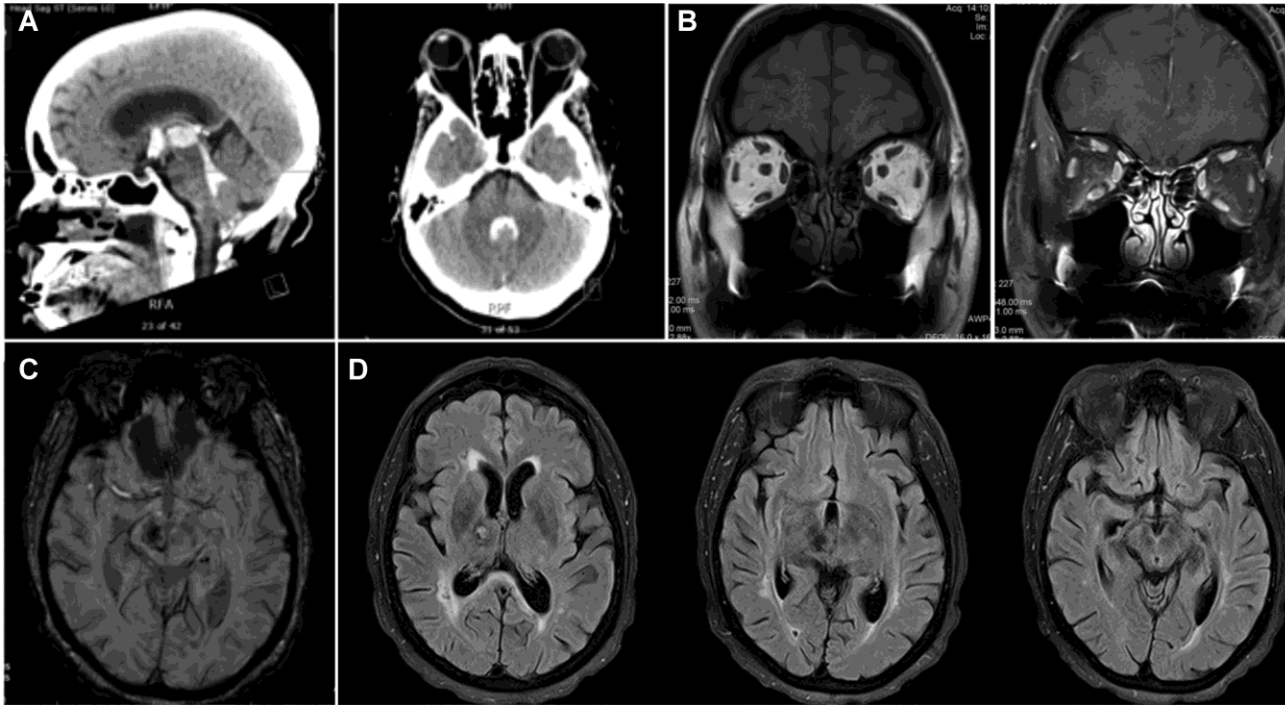
Resident & Fellow Section



# Vignette

- 51 year-old female with history of hypertension
- Sudden onset of left-sided weakness and diplopia
- Examination showed abnormal vertical eye movements, lid retraction and convergence-retraction nystagmus

# Imaging



AMERICAN ACADEMY OF  
NEUROLOGY.



# Vertical One-and-a-Half Syndrome

- Bilateral upgaze palsy with limitation of infraduction on the right, overcome with a doll's head maneuver.
- Imaging revealed a large hemorrhagic infarct involving the right thalamus and rostral midbrain with intraventricular extension
- Vertical one-and-a half syndrome is an uncommon presentation resulting from a unilateral thalamomesencephalic stroke with involvement of the riMLF and posterior commissure and was accompanied here by dorsal midbrain syndrome.