

eTable 1. List of antibodies (A) and reagents for flow cytometry analysis (B)

A

Antibodies	Clone and Cat#	From
CD3 PE-Cy7	Clone SK7; Cat# 341111	BD
CD3 PE		
CD4 BV711	Clone SK3; Cat# 63028	BD
CD8 APC-H7	Clone SK1; Cat# 41400	BD
TNF α FITC	Clone MAb11; Cat# 552889	BD
IL2 PerCP-Cy5.5	Clone MQ1-17H12; Cat# 560708	BD
IFN γ BV421	Clone B27; Cat# 562988	BD
Fixable Viability stain 700 APC-R700	Cat#564997	BD

B

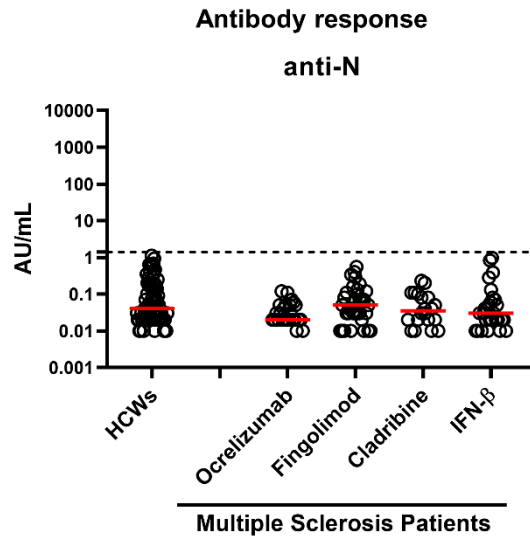
Reagents	Cat#	From
Brilliant stain Buffer	563794	BD
Cytofix/Cytoperm solution kit	554714	BD

eTable 2. Health status of the health care workers enrolled.

Health Care Workers Status		Total (N=78)	Frequency (%)
	Healthy	64	82.0
Disease status	Endocrine And Metabolic Diseases	Hypothyroidism	6
		Diabetes Mellitus	1
	History of Allergy	3	4.0
	Cardiovascular Diseases	Arrhythmia	1
		Hypertension	1
	NA	2	2.5
Corticosteroids	Yes*	3	4
	No	73	93.5
	NA	2	2.5

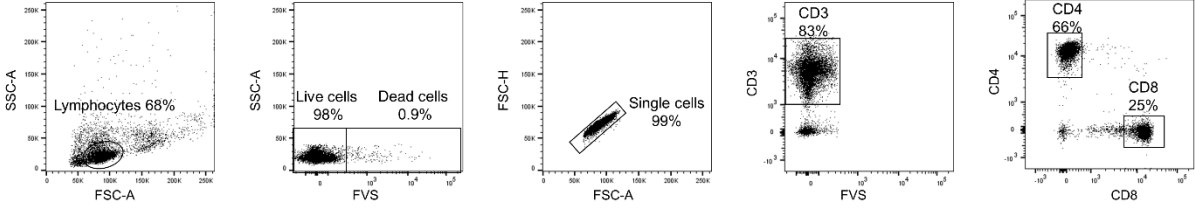
Footnotes: NA: information not available; *Corticosteroids were taken by the HCWs reporting allergic diseases. Dosage was not reported.

eFigure 1



eFigure 1. Anti-N-IgG levels of MS vaccinated patients. Evaluation of anti-N-IgG levels in MS vaccinated patients stratified according to drug treatment in four groups: ocrelizumab (n=25), fingolimod (n=35), cladribine (n=20) and IFN- β (n=28). SARS-CoV-2 specific anti-N Abs were quantified in plasma or sera samples. Anti-N-IgG are expressed as Arbitrary Units (AU)/mL and values ≥ 1.4 are considered positive. Each black dot represents one sample. Dashed line identifies the cut-off of 1.4 AU/mL. The red horizontal lines represent the median; statistical analysis was performed using the Mann-Whitney test, and p value was considered significant if ≤ 0.0125 . Footnotes: N, Nucleocapsid; Abs, antibodies.

eFigure 2



eFigure 2. Flow cytometry gating strategy. T-cell subpopulations were gated as shown according to the expression of surface markers.