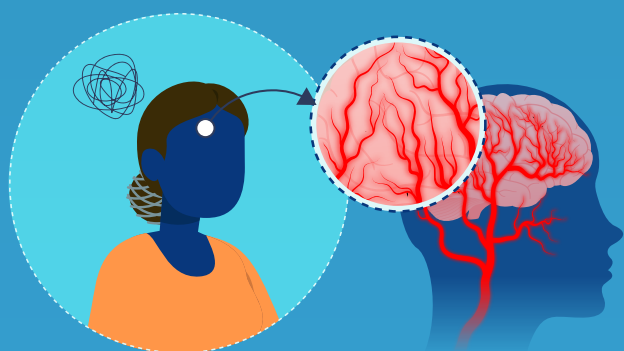


Vascular Cognitive Impairment in Patients with CADASIL

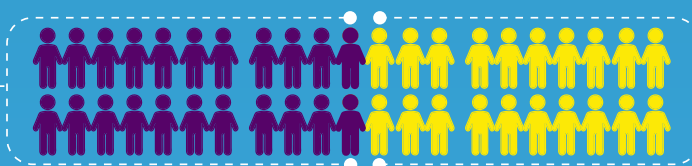


Some patients with cerebral autosomal dominant arteriopathy with subcortical infarcts and leukoencephalopathy (CADASIL) exhibit impaired cognition

What are the prevalence of and risk factors associated with vascular cognitive impairment (VCI) in patients with CADASIL?

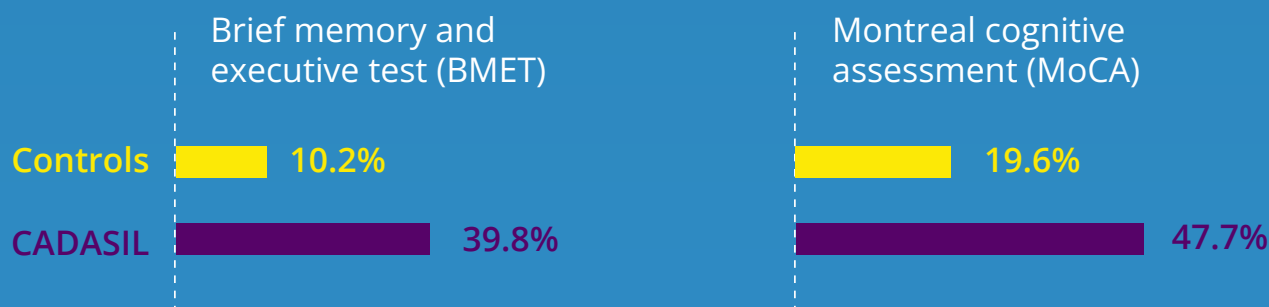
Cross-sectional study to determine VCI and its associations in

Patients with CADASIL (n = 176)

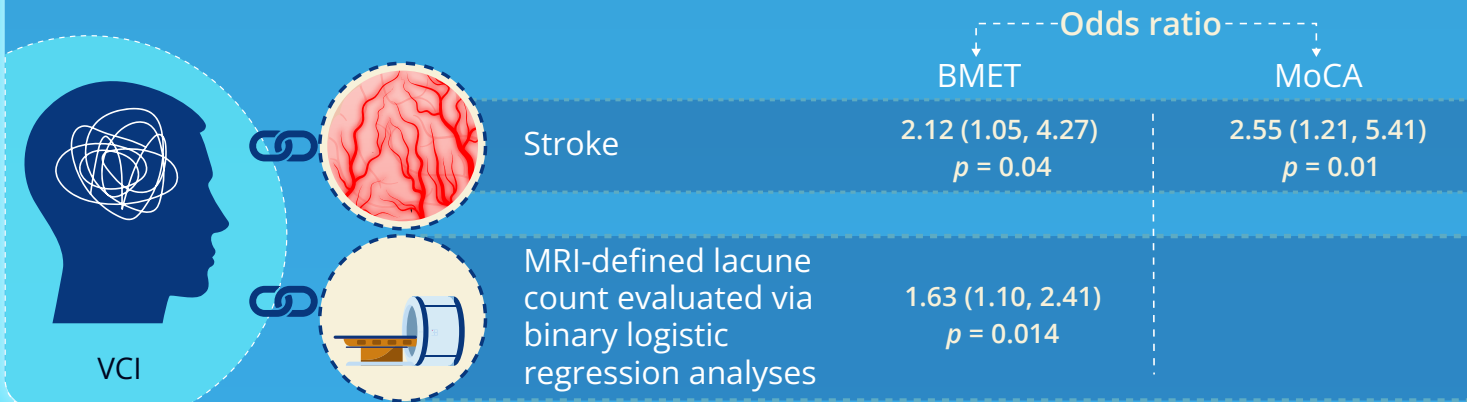


Healthy controls (n = 265)

VCI was more common in patients with CADASIL based on



Factors associated with cognitive impairment in patients with CADASIL after adjusting for age and sex



Patients with CADASIL have a high prevalence of VCI, with stroke and MRI-defined lacune count being independent VCI risk factors