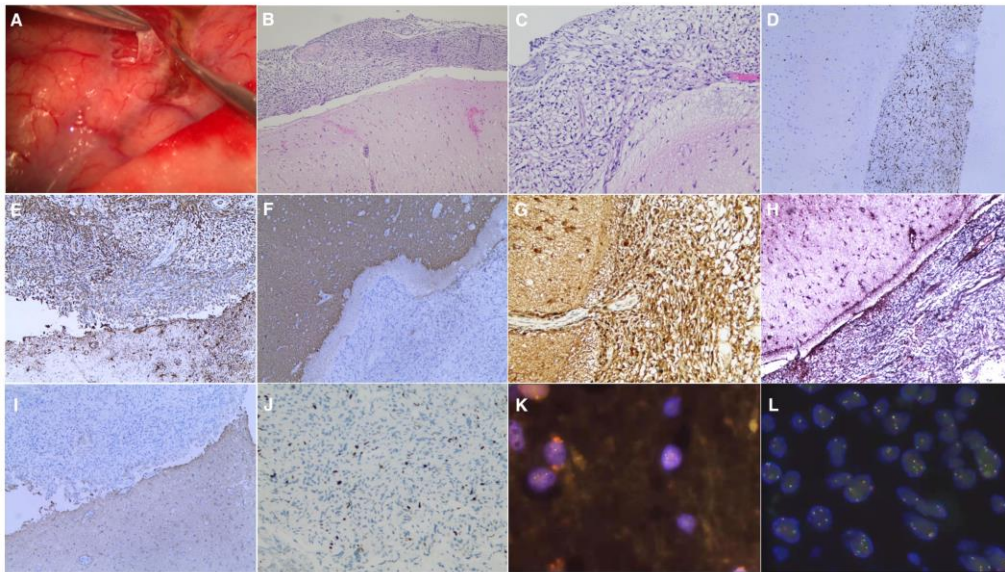


Supplement



eFigure 1 The pathological morphology of brain biopsy

Surgical findings showed thickened and toughened leptomeninges of ground-glass appearance, with gray exudates under the leptomeninges (A). Thickened leptomeninges were diffusely infiltrated by neoplastic cells (H&E, x 100, B), which were rounded, ovoid or spindle-shaped, with clear cytoplasm (H&E, x 400, C). The tumor cells showed immunoreactivity for Oligo-2 (x200, D), Vim (x400, E), Syn (focally, x200, F), S100 (x400, G) and reticulum fiber (x400, H). Other immunostainings were negative for GFAP (x200, I), EMA, PR auto, IDH1, NeuN, NSE and NF. The cell proliferation index measured by Ki-67 was approximately 4% (x400, J). Fluorescence in situ hybridization (FISH) analysis showed both the chromosomal arm 1p and 19q were intact (higher magnification, K). KIAA1549-BRAF fusion gene was detected by FISH in 34 percent of the tumor cells (BRAF in green and KIAA1549 in red, higher magnification, L).